

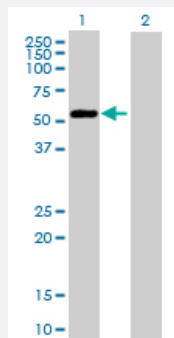
MaxPab®

BCCIP purified MaxPab mouse polyclonal antibody (B01P)

Catalog # H00056647-B01P

Size 50 ug

Applications

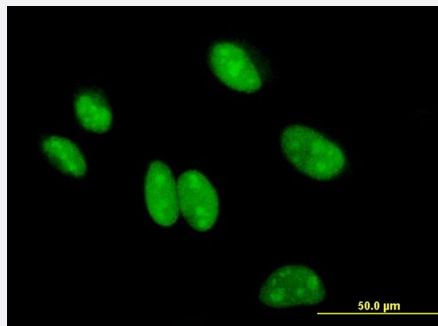


Western Blot (Transfected lysate)

Western Blot analysis of BCCIP expression in transfected 293T cell line ([H00056647-T01](#)) by BCCIP MaxPab polyclonal antibody.

Lane 1: BCCIP transfected lysate(34.54 KDa).

Lane 2: Non-transfected lysate.



Immunofluorescence

Immunofluorescence of purified MaxPab antibody to BCCIP on HeLa cell. [antibody concentration 10 ug/ml]

Specification

Product Description

Mouse polyclonal antibody raised against a full-length human BCCIP protein.

Immunogen

BCCIP (AAH09771, 1 a.a. ~ 314 a.a) full-length human protein.

Sequence

MASRSKRRAVESGVPQPPDPPVQRDEEEKEVENEDDDSDKEKDEEDEVIDEEVNIEFEAYSLSDNDYDGIKLLQQLFLKAPVNTAELTDLLIQQNHIGSVIKQTDVSEDSNDDMDEDEVFGFISLLNLTERKGTQCVEQIQELVLRFCCKNCEKSMVEQLDKFLNDTTKPVGLLLSERFINVPPQIALPMYQQQLQKELAGAHRTNKPCGKCYFYLLISKTFVEAEKNNSKKKPSNKKKAALMFANAEFFFEKAILKFNYSVQEESDTCLGGKWSFDDVPMTPLRVVMLIPGDKMNEIMDKLKEYLSV

Host

Mouse

Reactivity	Human
Interspecies Antigen Sequence	Mouse (75); Rat (77)
Quality Control Testing	Antibody reactive against mammalian transfected lysate.
Storage Buffer	In 1x PBS, pH 7.4
Storage Instruction	Store at -20°C or lower. Aliquot to avoid repeated freezing and thawing.

Applications

- Western Blot (Transfected lysate)

Western Blot analysis of BCCIP expression in transfected 293T cell line ([H00056647-T01](#)) by BCCIP MaxPab polyclonal antibody.

Lane 1: BCCIP transfected lysate(34.54 KDa).

Lane 2: Non-transfected lysate.

[Protocol Download](#)

- Immunofluorescence

Immunofluorescence of purified MaxPab antibody to BCCIP on HeLa cell. [antibody concentration 10 ug/ml]

Gene Info — BCCIP

Entrez GeneID	56647
GeneBank Accession#	BC009771
Protein Accession#	AAH09771
Gene Name	BCCIP
Gene Alias	TOK-1, TOK1
Gene Description	BRCA2 and CDKN1A interacting protein
Gene Ontology	Hyperlink

Gene Summary

This gene product was isolated on the basis of its interaction with BRCA2 and p21 proteins. It is an evolutionarily conserved nuclear protein with multiple interacting domains. The N-terminal half shares moderate homology with regions of calmodulin and M-calpain, suggesting that it may also bind calcium. Functional studies indicate that this protein may be an important cofactor for BRCA2 in tumor suppression, and a modulator of CDK2 kinase activity via p21. This protein has also been implicated in the regulation of BRCA2 and RAD51 nuclear focus formation, double-strand break-induced homologous recombination, and cell cycle progression. Multiple transcript variants encoding different isoforms have been described for this gene. [provided by RefSeq]

Other Designations

BCCIPalpha|BCCIPbeta|BRCA2 and CDKN1A-interacting protein|BRCA2 and Cip1/p21 interacting protein|OTTHUMP00000020714|OTTHUMP00000020715|OTTHUMP00000020716|TOK-1alpha|TOK-1beta|cdk inhibitor p21 binding protein|p21- and CDK-associated protein 1

Disease

- [Breast cancer](#)
- [Breast Neoplasms](#)
- [Carcinoma](#)
- [Coronary Artery Disease](#)
- [Genetic Predisposition to Disease](#)
- [Melanoma](#)
- [Prostatic Neoplasms](#)
- [Skin Neoplasms](#)