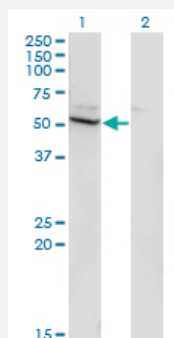


# CYP26B1 monoclonal antibody (M02), clone 2G7

Catalog # H00056603-M02

Size 100 ug

## Applications

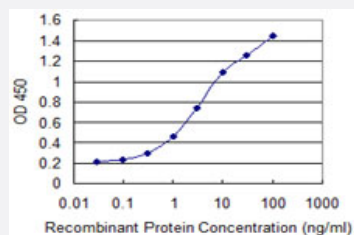


### Western Blot (Transfected lysate)

Western Blot analysis of CYP26B1 expression in transfected 293T cell line by CYP26B1 monoclonal antibody (M02), clone 2G7.

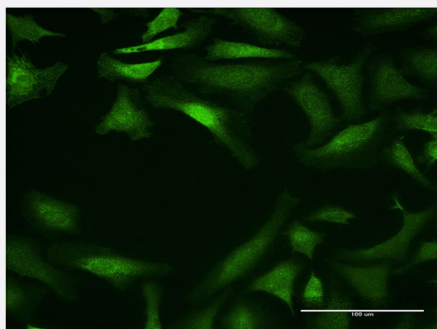
Lane 1: CYP26B1 transfected lysate (Predicted MW: 57.5 KDa).

Lane 2: Non-transfected lysate.



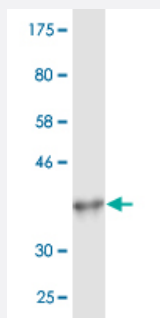
### Sandwich ELISA (Recombinant protein)

Detection limit for recombinant GST tagged CYP26B1 is 0.1 ng/ml as a capture antibody.



### Immunofluorescence

Immunofluorescence of monoclonal antibody to CYP26B1 on HeLa cell .  
[antibody concentration 10 ug/ml]



Western Blot detection against Immunogen (36.74 KDa) .

## Specification

<b>Product Description</b>	Mouse monoclonal antibody raised against a partial recombinant CYP26B1.
<b>Immunogen</b>	CYP26B1 (NP_063938, 131 a.a. ~ 230 a.a) partial recombinant protein with GST tag. MW of the GST tag alone is 26 KDa.
<b>Sequence</b>	SNSIGDIHRNKRKVF <del>SKIFS</del> HEALESYLPKIQLV <del>IQDTL</del> RAWSSHP <del>EA</del> INVYQEAQKLTF <del>RM</del> AI <del>R</del> VLLGFSIPEEDLGHLFEVYQQFVDNVFSLPVDLPF
<b>Host</b>	Mouse
<b>Reactivity</b>	Human
<b>Interspecies Antigen Sequence</b>	Mouse (96); Rat (95)
<b>Isotype</b>	IgG2a Kappa
<b>Quality Control Testing</b>	Antibody Reactive Against Recombinant Protein. Western Blot detection against Immunogen (36.74 KDa) .
<b>Storage Buffer</b>	In 1x PBS, pH 7.4
<b>Storage Instruction</b>	Store at -20°C or lower. Aliquot to avoid repeated freezing and thawing.

## Applications

### ● Western Blot (Transfected lysate)

Western Blot analysis of CYP26B1 expression in transfected 293T cell line by CYP26B1 monoclonal antibody (M02), clone 2G7.

Lane 1: CYP26B1 transfected lysate (Predicted MW: 57.5 KDa).

Lane 2: Non-transfected lysate.

[Protocol Download](#)

- Western Blot (Recombinant protein)

[Protocol Download](#)

- Sandwich ELISA (Recombinant protein)

Detection limit for recombinant GST tagged CYP26B1 is 0.1 ng/ml as a capture antibody.

[Protocol Download](#)

- ELISA

- Immunofluorescence

Immunofluorescence of monoclonal antibody to CYP26B1 on HeLa cell . [antibody concentration 10 ug/ml]

## Gene Info — CYP26B1

Entrez GeneID [56603](#)

GeneBank Accession# [NM\\_019885](#)

Protein Accession# [NP\\_063938](#)

Gene Name CYP26B1

Gene Alias CYP26A2, DKFZp686G0638, MGC129613, P450RAI-2

Gene Description cytochrome P450, family 26, subfamily B, polypeptide 1

Omim ID [605207](#)

Gene Ontology [Hyperlink](#)

**Gene Summary** This gene encodes a member of the cytochrome P450 superfamily of enzymes. The cytochrome P450 proteins are monooxygenases that catalyze many reactions involved in drug metabolism and the synthesis of cholesterol, steroids and other lipids. The enzyme encoded by this gene is involved in the specific inactivation of all-trans-retinoic acid to hydroxylated forms, such as 4-oxo-, 4-OH-, and 18-OH-all-trans-retinoic acid. [provided by RefSeq]

**Other Designations** cytochrome P450 retinoid metabolizing protein|cytochrome P450, family 26, subfamily b, polypeptide 1|retinoic acid-metabolizing cytochrome

## Pathway

- [Retinol metabolism](#)

## Disease

- [Genetic Predisposition to Disease](#)
- [Kidney Diseases](#)
- [Meningomyelocele](#)
- [Schizophrenia](#)
- [Spinal Dysraphism](#)
- [Vitamin A Deficiency](#)