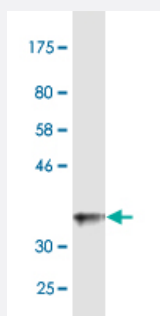


# MMP26 monoclonal antibody (M02A), clone 3B9

Catalog # H00056547-M02A

Size 200 uL

## Applications



Western Blot detection against Immunogen (37.84 KDa) .

## Specification

<b>Product Description</b>	Mouse monoclonal antibody raised against a partial recombinant MMP26.
<b>Immunogen</b>	MMP26 (NP_068573, 152 a.a. ~ 261 a.a) partial recombinant protein with GST tag. MW of the GST tag alone is 26 KDa.
<b>Sequence</b>	SFWQWAHEDGWPFDGPGGILGHAFLPNSGNPGVVHFDKNEHWSASDTGYNLFLVATHEIGHSL GLQHSGNQSSIMYPTYWYHDPRTFQLSADDIQRHQHLYGEKCSSDIP
<b>Host</b>	Mouse
<b>Reactivity</b>	Human
<b>Isotype</b>	IgG1 Kappa
<b>Quality Control Testing</b>	Antibody Reactive Against Recombinant Protein. Western Blot detection against Immunogen (37.84 KDa) .
<b>Storage Buffer</b>	In ascites fluid
<b>Storage Instruction</b>	Store at -20°C or lower. Aliquot to avoid repeated freezing and thawing.

## Applications

- Western Blot (Recombinant protein)

[Protocol Download](#)

- ELISA

## Gene Info — MMP26

Entrez GeneID [56547](#)

GeneBank Accession# [NM\\_021801](#)

Protein Accession# [NP\\_068573](#)

Gene Name MMP26

Gene Alias MGC126590, MGC126592

Gene Description matrix metalloproteinase 26

Omim ID [605470](#)

Gene Ontology [Hyperlink](#)

**Gene Summary**

Proteins of the matrix metalloproteinase (MMP) family are involved in the breakdown of extracellular matrix in normal physiological processes, such as embryonic development, reproduction, and tissue remodeling, as well as in disease processes, such as arthritis and metastasis. Most MMP's are secreted as inactive proproteins which are activated when cleaved by extracellular proteinases. The encoded protein degrades type IV collagen, fibronectin, fibrinogen, casein, vitronectin, alpha 1-antitrypsin, alpha 2-macroglobulin, and insulin-like growth factor-binding protein 1, and activates MMP9 by cleavage. The protein differs from most MMP family members in that it lacks a conserved C-terminal protein domain. [provided by RefSeq]

**Other Designations** OTTHUMP00000069244|endometase|matrilysin 2|matrix metalloproteinase 26

## Disease

- [Coronary Disease](#)
- [Diabetes Mellitus](#)
- [Genetic Predisposition to Disease](#)
- [Hyperglycemia](#)
- [Mucocutaneous Lymph Node Syndrome](#)

- [Ovarian Neoplasms](#)