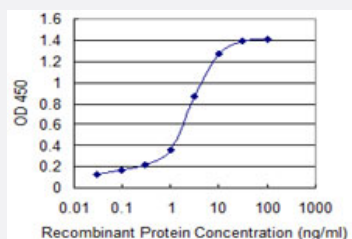


# MMP26 monoclonal antibody (M02), clone 3B9

Catalog # H00056547-M02

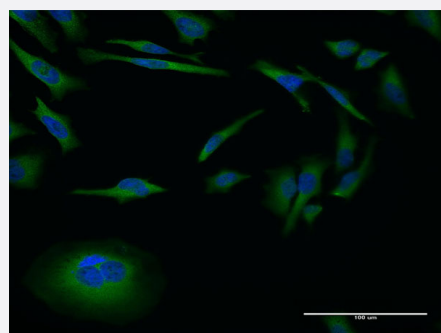
Size 50 ug

## Applications



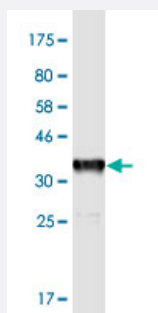
### Sandwich ELISA (Recombinant protein)

Detection limit for recombinant GST tagged MMP26 is 0.03 ng/ml as a capture antibody.



### Immunofluorescence

Immunofluorescence of monoclonal antibody to MMP26 on HeLa cell .  
[antibody concentration 10 ug/ml]



Western Blot detection against Immunogen (37.84 KDa) .

## Specification

### Product Description

Mouse monoclonal antibody raised against a partial recombinant MMP26.

Immunogen	MMP26 (NP_068573, 152 a.a. ~ 261 a.a) partial recombinant protein with GST tag. MW of the GST tag alone is 26 KDa.
Sequence	SFWQWAHEDGWPFDPGGILGHAFLPNSGNPGVVHFDKNEHWSASDTGYNLFLVATHEIGHSL GLQHSGNQSSIMYPTYWYHDPRTFQLSADDIQRILYGEKCSSDIP
Host	Mouse
Reactivity	Human
Isotype	IgG1 Kappa
Quality Control Testing	Antibody Reactive Against Recombinant Protein. Western Blot detection against Immunogen (37.84 KDa) .
Storage Buffer	In 1x PBS, pH 7.4
Storage Instruction	Store at -20°C or lower. Aliquot to avoid repeated freezing and thawing.

## Applications

- Western Blot (Recombinant protein)

[Protocol Download](#)

- Sandwich ELISA (Recombinant protein)

Detection limit for recombinant GST tagged MMP26 is 0.03 ng/ml as a capture antibody.

[Protocol Download](#)

- ELISA

- Immunofluorescence

Immunofluorescence of monoclonal antibody to MMP26 on HeLa cell . [antibody concentration 10 ug/ml]

## Gene Info — MMP26

Entrez GeneID	<a href="#">56547</a>
GeneBank Accession#	<a href="#">NM_021801</a>
Protein Accession#	<a href="#">NP_068573</a>
Gene Name	MMP26

Gene Alias	MGC126590, MGC126592
Gene Description	matrix metalloproteinase 26
Omim ID	<a href="#">605470</a>
Gene Ontology	<a href="#">Hyperlink</a>
Gene Summary	<p>Proteins of the matrix metalloproteinase (MMP) family are involved in the breakdown of extracellular matrix in normal physiological processes, such as embryonic development, reproduction, and tissue remodeling, as well as in disease processes, such as arthritis and metastasis. Most MMP's are secreted as inactive proproteins which are activated when cleaved by extracellular proteinases. The encoded protein degrades type IV collagen, fibronectin, fibrinogen, casein, vitronectin, alpha 1-antitrypsin, alpha 2-macroglobulin, and insulin-like growth factor-binding protein 1, and activates MMP9 by cleavage. The protein differs from most MMP family members in that it lacks a conserved C-terminal protein domain. [provided by RefSeq]</p>
Other Designations	OTTHUMP00000069244 endometase matrilysin 2 matrix metalloproteinase 26

## Disease

- [Coronary Disease](#)
- [Diabetes Mellitus](#)
- [Genetic Predisposition to Disease](#)
- [Hyperglycemia](#)
- [Mucocutaneous Lymph Node Syndrome](#)
- [Ovarian Neoplasms](#)