

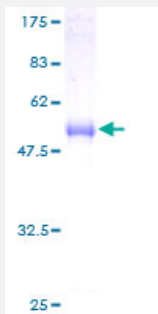
Full-Length

## DNAJC12 (Human) Recombinant Protein (P01)

Catalog # H00056521-P01

Size 25 ug, 10 ug

### Applications



### Specification

<b>Product Description</b>	Human DNAJC12 full-length ORF ( AAH17018, 1 a.a. - 198 a.a.) recombinant protein with GST-tag at N-terminal.
<b>Sequence</b>	MDAILNYRSEDTEYYTLLGCDELSSVEQILAEFKVRALECHPDKHPENPKAVETFQKLQKAKEIL TNEESRARYDHWRRSQMSMPFQQWEALNDSVKTSMHWVVRGKKDLMLEESDKTHHTKMENE ECNEQRERKKEELASTAEKTEQKEPKPLEKSVSPQNSDSSGFADVNGWHLRFRWSKDAPSEL LRKFRNYEI
<b>Host</b>	Wheat Germ (in vitro)
<b>Theoretical MW (kDa)</b>	47.52
<b>Interspecies Antigen Sequence</b>	Mouse (77); Rat (76)
<b>Preparation Method</b>	<a href="#">in vitro wheat germ expression system</a>
<b>Purification</b>	Glutathione Sepharose 4 Fast Flow
<b>Quality Control Testing</b>	12.5% SDS-PAGE Stained with Coomassie Blue.
<b>Storage Buffer</b>	50 mM Tris-HCl, 10 mM reduced Glutathione, pH=8.0 in the elution buffer.
<b>Storage Instruction</b>	Store at -80°C. Aliquot to avoid repeated freezing and thawing.

## Note

Best use within three months from the date of receipt of this protein.

## Applications

- Enzyme-linked Immunoabsorbent Assay
- Western Blot (Recombinant protein)
- Antibody Production
- Protein Array

## Gene Info — DNAJC12

Entrez GeneID [56521](#)

GeneBank Accession# [BC017018](#)

Protein Accession# [AAH17018](#)

Gene Name DNAJC12

Gene Alias JDP1

Gene Description DnaJ (Hsp40) homolog, subfamily C, member 12

Omim ID [606060](#)

Gene Ontology [Hyperlink](#)

**Gene Summary** This gene encodes a member of a subclass of the HSP40/DnaJ protein family. Members of this family of proteins are associated with complex assembly, protein folding, and export. Two transcript variants encoding distinct isoforms have been identified for this gene. [provided by RefSeq]

**Other Designations** J domain containing protein 1|J domain containing protein 1 (JDP1)|J domain protein 1|OTTHUMP00000019689|OTTHUMP00000019690

## Disease

- [Alzheimer disease](#)
- [Genetic Predisposition to Disease](#)