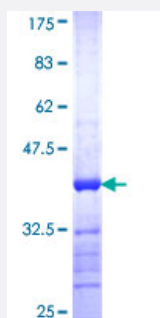


CPXM1 (Human) Recombinant Protein (Q01)

Catalog # H00056265-Q01

Size 25 ug, 10 ug

Applications



Specification

Product Description	Human CPXM1 partial ORF (NP_062555, 610 a.a. - 718 a.a.) recombinant protein with GST-tag at N-terminal.
Sequence	NKDALLTYLEQVRMGAGVVRDKDTELGIADAVIAVDGINHDVTTAWGGDYWRLLTPGDYMTASA EGYHSVTRNCRVTFEEGPFPCNFVLTKTPKQRLRELLAAGAKV
Host	Wheat Germ (in vitro)
Theoretical MW (kDa)	37.73
Interspecies Antigen Sequence	Mouse (84); Rat (85)
Preparation Method	in vitro wheat germ expression system
Purification	Glutathione Sepharose 4 Fast Flow
Quality Control Testing	12.5% SDS-PAGE Stained with Coomassie Blue.
Storage Buffer	50 mM Tris-HCl, 10 mM reduced Glutathione, pH=8.0 in the elution buffer.
Storage Instruction	Store at -80°C. Aliquot to avoid repeated freezing and thawing.
Note	Best use within three months from the date of receipt of this protein.

Applications

- Enzyme-linked Immunoabsorbent Assay
- Western Blot (Recombinant protein)
- Antibody Production
- Protein Array

Gene Info — CPXM1

Entrez GeneID [56265](#)

GeneBank Accession# [NM_019609](#)

Protein Accession# [NP_062555](#)

Gene Name CPXM1

Gene Alias CPX1, CPXM

Gene Description carboxypeptidase X (M14 family), member 1

Omim ID [609555](#)

Gene Ontology [Hyperlink](#)

Gene Summary The protein encoded by this gene is a member of the M14 family of zinc carboxypeptidases; however, the protein has no detectable carboxypeptidase activity. The encoded protein is thought to be an extracellular and/or membrane protein, and may be involved in cell-cell interactions. [provided by RefSeq]

Other Designations OTTHUMP00000030039|carboxypeptidase X, member 1|metallocarboxypeptidase CPX-1