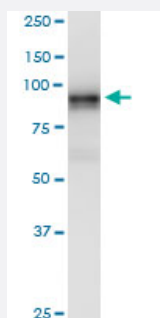


LRRC8A monoclonal antibody (M04), clone 8H9

Catalog # H00056262-M04

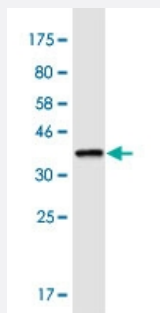
Size 100 ug

Applications



Western Blot (Cell lysate)

LRRC8A monoclonal antibody (M04), clone 8H9. Western Blot analysis of LRRC8A expression in A-431.



Western Blot detection against Immunogen (36.74 KDa) .

Specification

Product Description	Mouse monoclonal antibody raised against a partial recombinant LRRC8A.
Immunogen	LRRC8A (NP_062540.2, 711 a.a. ~ 810 a.a) partial recombinant protein with GST tag. MW of the GST tag alone is 26 KDa.
Sequence	QNLAITANRIETLPPELFQCRKLRALHLGNNVLQSLPSRVGELTNLTQIELRGNRLECLPVELGECPL LLKRSGLVVEEDLFNTLPPEVKERLWRADKEQA
Host	Mouse
Reactivity	Human

Interspecies Antigen Sequence	Rat (97)
Isotype	IgG2a Kappa
Quality Control Testing	Antibody Reactive Against Recombinant Protein. Western Blot detection against Immunogen (36.74 KDa) .
Storage Buffer	In 1x PBS, pH 7.4
Storage Instruction	Store at -20°C or lower. Aliquot to avoid repeated freezing and thawing.

Applications

- Western Blot (Cell lysate)

LRRC8A monoclonal antibody (M04), clone 8H9. Western Blot analysis of LRRC8A expression in A-431.

[Protocol Download](#)

- Western Blot (Recombinant protein)

[Protocol Download](#)

- ELISA

Gene Info — LRRC8A

Entrez GeneID	56262
GeneBank Accession#	NM_019594
Protein Accession#	NP_062540.2
Gene Name	LRRC8A
Gene Alias	FLJ10337, FLJ41617, KIAA1437, LRRC8
Gene Description	leucine rich repeat containing 8 family, member A
Omim ID	601495 608360
Gene Ontology	Hyperlink

Gene Summary

This gene encodes a protein belonging to the leucine-rich repeat family of proteins, which are involved in diverse biological processes, including cell adhesion, cellular trafficking, and hormone-receptor interactions. This family member is a putative four-pass transmembrane protein that plays a role in B cell development. Defects in this gene cause autosomal dominant non-Bruton type agammaglobulinemia, an immunodeficiency disease resulting from defects in B cell maturation. Multiple alternatively spliced transcript variants, which encode the same protein, have been identified for this gene. [provided by RefSeq]

Other Designations

OTTHUMP00000022308|OTTHUMP00000022309|leucine-rich repeat-containing protein 8A

Publication Reference

- [LRRC8A anion channels modulate vascular reactivity via association with myosin phosphatase rho interacting protein.](#)

Hyehun Choi, Michael R Miller, Hong-Ngan Nguyen, Jeffrey C Rohrbough, Stephen R Koch, Naoko Boatwright, Michael T Yarboro, Rajan Sah, W Hayes McDonald, J Jeffrey Reese, Ryan J Stark, Fred S Lamb.

FASEB Journal 2023 Jul; 37(7):e23028.

Application: PLA, Mouse, Mouse vascular smooth muscle cell