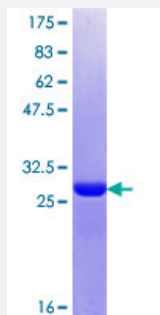


# NDNL2 (Human) Recombinant Protein (Q01)

Catalog # H00056160-Q01

Size 25 ug, 10 ug

## Applications



## Specification

<b>Product Description</b>	Human NDNL2 partial ORF ( NP_619649.1, 2 a.a. - 52 a.a.) recombinant protein with GST-tag at N-terminal.
<b>Sequence</b>	LQKPRNRGRSGGQAERDRDWSHSGNPGASRAGEDARVLRDGF AEEAPSTSR
<b>Host</b>	Wheat Germ (in vitro)
<b>Theoretical MW (kDa)</b>	31.35
<b>Interspecies Antigen Sequence</b>	Mouse (76); Rat (77)
<b>Preparation Method</b>	<a href="#">in vitro wheat germ expression system</a>
<b>Purification</b>	Glutathione Sepharose 4 Fast Flow
<b>Quality Control Testing</b>	12.5% SDS-PAGE Stained with Coomassie Blue.
<b>Storage Buffer</b>	50 mM Tris-HCl, 10 mM reduced Glutathione, pH=8.0 in the elution buffer.
<b>Storage Instruction</b>	Store at -80°C. Aliquot to avoid repeated freezing and thawing.
<b>Note</b>	Best use within three months from the date of receipt of this protein.

## Applications

- Enzyme-linked Immunoabsorbent Assay
- Western Blot (Recombinant protein)
- Antibody Production
- Protein Array

## Gene Info — NDNL2

Entrez GeneID	<a href="#">56160</a>
GeneBank Accession#	<a href="#">NM_138704</a>
Protein Accession#	<a href="#">NP_619649.1</a>
Gene Name	NDNL2
Gene Alias	HCA4, MAGEG1, MAGEL3, NSE3, NSMCE3
Gene Description	necdin-like 2
Omim ID	<a href="#">608243</a>
Gene Ontology	<a href="#">Hyperlink</a>
Gene Summary	This intronless gene encodes a member of the MAGE superfamily. The encoded protein is 76% identical to the mouse mage-g1 protein. [provided by RefSeq]
Other Designations	OTTHUMP00000159576 hepatocellular carcinoma-associated protein HCA4 melanoma antigen, family G, 1 necdin-like gene 2