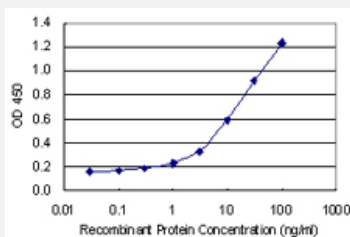


# NDNL2 monoclonal antibody (M02), clone 4F7

Catalog # H00056160-M02

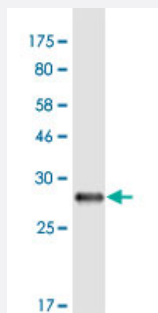
Size 100 ug

## Applications



### Sandwich ELISA (Recombinant protein)

Detection limit for recombinant GST tagged NDNL2 is 0.3 ng/ml as a capture antibody.



Western Blot detection against Immunogen (31.35 KDa) .

## Specification

<b>Product Description</b>	Mouse monoclonal antibody raised against a partial recombinant NDNL2.
<b>Immunogen</b>	NDNL2 (NP_619649.1, 2 a.a. ~ 52 a.a) partial recombinant protein with GST tag. MW of the GST tag alone is 26 KDa.
<b>Sequence</b>	LQKPRNRGRSGGQAERDRDWSHSGNPGASRAGEDARVLRDGF AEEAPSTSR
<b>Host</b>	Mouse
<b>Reactivity</b>	Human
<b>Interspecies Antigen Sequence</b>	Mouse (76); Rat (77)

Isotype	IgG2a Kappa
Quality Control Testing	Antibody Reactive Against Recombinant Protein. Western Blot detection against Immunogen (31.35 KDa) .
Storage Buffer	In 1x PBS, pH 7.4
Storage Instruction	Store at -20°C or lower. Aliquot to avoid repeated freezing and thawing.

## Applications

- Western Blot (Recombinant protein)

[Protocol Download](#)

- Sandwich ELISA (Recombinant protein)

Detection limit for recombinant GST tagged NDNL2 is 0.3 ng/ml as a capture antibody.

[Protocol Download](#)

- ELISA

## Gene Info — NDNL2

Entrez GeneID	<a href="#">56160</a>
GeneBank Accession#	<a href="#">NM_138704</a>
Protein Accession#	<a href="#">NP_619649.1</a>
Gene Name	NDNL2
Gene Alias	HCA4, MAGEG1, MAGEL3, NSE3, NSMCE3
Gene Description	necdin-like 2
Omim ID	<a href="#">608243</a>
Gene Ontology	<a href="#">Hyperlink</a>
Gene Summary	This intronless gene encodes a member of the MAGE superfamily. The encoded protein is 76% identical to the mouse mage-g1 protein. [provided by RefSeq]
Other Designations	OTTHUMP00000159576 hepatocellular carcinoma-associated protein HCA4 melanoma antigen, family G, 1 necdin-like gene 2