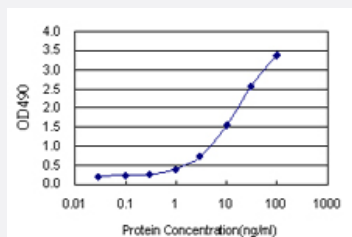


# TEX13A (Human) Matched Antibody Pair

Catalog # H00056157-AP22

Size 1 Set

## Applications



Sandwich ELISA detection sensitivity ranging from 0.1 ng/ml to 100 ng/ml.

## Specification

<b>Product Description</b>	This antibody pair set comes with a matched antibody pair to detect and quantify the protein level of human TEX13A.
<b>Reactivity</b>	Human
<b>Interspecies Antigen Sequence</b>	Mouse (45); Rat (46)
<b>Quality Control Testing</b>	Standard curve using recombinant protein ( H00056157-P01 ) as an analyte. Sandwich ELISA detection sensitivity ranging from 0.1 ng/ml to 100 ng/ml.
<b>Supplied Product</b>	Antibody pair set content: 1. Capture antibody: rabbit MaxPab® affinity purified polyclonal anti-TEX13A (100 ug) 2. Detection antibody: mouse purified polyclonal anti-TEX13A (20 ug) *Reagents are sufficient for at least 1-2 x 96 well plates using recommended protocols.
<b>Storage Instruction</b>	Store reagents of the antibody pair set at -20°C or lower. Please aliquot to avoid repeated freeze thaw cycle. Reagents should be returned to -20°C storage immediately after use.

## Applications

- ELISA Pair (Recombinant protein)

[Protocol Download](#)

## Gene Info — TEX13A

Entrez GeneID	<a href="#">56157</a>
---------------	-----------------------

Gene Name	TEX13A
-----------	--------

Gene Alias	MGC131984
------------	-----------

Gene Description	testis expressed 13A
------------------	----------------------

Omim ID	<a href="#">300312</a>
---------	------------------------

Gene Ontology	<a href="#">Hyperlink</a>
---------------	---------------------------

Gene Summary	This gene is similar to a mouse gene that is expressed in the testis. [provided by RefSeq
--------------	---

Other Designations	testis expressed sequence 13A
--------------------	-------------------------------