

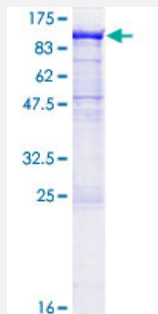
Full-Length

## PCDHA2 (Human) Recombinant Protein (P01)

Catalog # H00056146-P01

Size 25 ug, 10 ug

### Applications



### Specification

#### Product Description

Human PCDHA2 full-length ORF ( AAH03126.1, 1 a.a. - 808 a.a.) recombinant protein with GST-tag at N-terminal.

#### Sequence

MASSIRRGAWTRLLSLLLLAAWEVGSGQLRYSVPEEAKHGTFVGRIQDLGLELEELVPRLFR  
VASKRHGDLEVNLLQNGILFVNSRIDREELCGRSAECSIHVEVMDRPLQVFHVEVEVKDINDNPPI  
FPMTVKTIRFPESRLDSRFPLEGASDADIGVNALLSYKLSSEFFFLDIQANDELSESLSLVLGKS  
LDREETAENVLLLVATDGGKPELTGTVQILIKVLDVNDNEPTFAQSVYKVKLLENTANGTLVVKLNA  
SDADEGPNSEIVSLGSDVSSTIQTKFTIDPISGEIRTKGKLDYEEAKSYEIQVTATDKGTPSMSGHC  
KISLKLVDINDNTPEVSITSLSLPISENASLGTVALITVSDRDSGTNGHVTCSLTPHVPFKLVSTFKN  
YSLVLDSALDRESVSAYELVVTARDGGSPSLWATTSSIEVADVNDNAPAFAPQPEYTVFVKENN  
PPGCHFTVSAWDADAQENALVSYSLVERRVGERALSSYVSVHAESGKVYALQPLDHEEVELLQ  
FQVSARDAGVPPPLGSNVTLQVFVLDENDNAPALLAPRAGTAAGAVSELVPWSVGAGHVVAKVR  
AVDADSGYNWLSYELQLGTGSARIPFRVGLYTGEISTTRALDEADSPRHRLLVLVKDHGEPALTA  
TATVLVSLVESGQAPKASSRAWVGAAGSEATLVDVNVYIIAICAVSSLLVLTVLLYTALRCSVPPT  
EGARAPGKPTLVCSSAVGSWSYSQRRQRVCSGEDPPKTDLMAFSPSLSQGPDSAEKQLSE  
SEYVGKIWNFNLQQLAS

#### Host

Wheat Germ (in vitro)

#### Theoretical MW (kDa)

113.5

#### Interspecies Antigen Sequence

Mouse (85); Rat (84)

Preparation Method	<a href="#">in vitro wheat germ expression system</a>
Purification	Glutathione Sepharose 4 Fast Flow
Quality Control Testing	12.5% SDS-PAGE Stained with Coomassie Blue.
Storage Buffer	50 mM Tris-HCl, 10 mM reduced Glutathione, pH=8.0 in the elution buffer.
Storage Instruction	Store at -80°C. Aliquot to avoid repeated freezing and thawing.
Note	Best use within three months from the date of receipt of this protein.

## Applications

- Enzyme-linked Immunoabsorbent Assay
- Western Blot (Recombinant protein)
- Antibody Production
- Protein Array

## Gene Info — PCDHA2

Entrez GeneID	<a href="#">56146</a>
GeneBank Accession#	<a href="#">BC003126.1</a>
Protein Accession#	<a href="#">AAH03126.1</a>
Gene Name	PCDHA2
Gene Alias	PCDH-ALPHA2
Gene Description	protocadherin alpha 2
Omim ID	<a href="#">606308</a>
Gene Ontology	<a href="#">Hyperlink</a>

**Gene Summary**

This gene is a member of the protocadherin alpha gene cluster, one of three related gene clusters tandemly linked on chromosome five that demonstrate an unusual genomic organization similar to that of B-cell and T-cell receptor gene clusters. The alpha gene cluster is composed of 15 cadherin superfamily genes related to the mouse CNR genes and consists of 13 highly similar and 2 more distantly related coding sequences. The tandem array of 15 N-terminal exons, or variable exons, are followed by downstream C-terminal exons, or constant exons, which are shared by all genes in the cluster. The large, uninterrupted N-terminal exons each encode six cadherin ectodomains while the C-terminal exons encode the cytoplasmic domain. These neural cadherin-like cell adhesion proteins are integral plasma membrane proteins that most likely play a critical role in the establishment and function of specific cell-cell connections in the brain. Alternative splicing has been observed and additional variants have been suggested but their full-length nature has yet to be determined. [provided by RefSeq]

**Other Designations**

KIAA0345-like 12