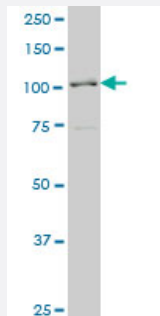


PCDHA6 monoclonal antibody (M05), clone 1A3

Catalog # H00056142-M05

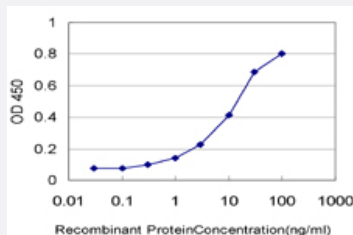
Size 100 ug

Applications



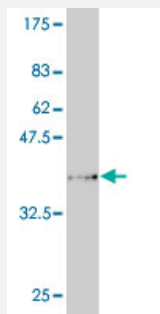
Western Blot (Cell lysate)

PCDHA6 monoclonal antibody (M05), clone 1A3 Western Blot analysis of PCDHA6 expression in K-562 (Cat # L009V1).



Sandwich ELISA (Recombinant protein)

Detection limit for recombinant GST tagged PCDHA6 is approximately 0.3ng/ml as a capture antibody.



Western Blot detection against Immunogen (34.1 KDa) .

Specification

Product Description

Mouse monoclonal antibody raised against a partial recombinant PCDHA6.

Immunogen	PCDHA6 (NP_061732, 295 a.a. ~ 370 a.a) partial recombinant protein with GST tag. MW of the GST tag alone is 26 KDa.
Sequence	IDRNTGEIVIRGNLDFEQENLYKILIDATDKGHPPMAGHCTVLVRILDKNDNVPEIALTSLSLPVREDAQFGTVIA
Host	Mouse
Reactivity	Human
Interspecies Antigen Sequence	Mouse (85); Rat (84)
Isotype	IgG2a Kappa
Quality Control Testing	Antibody Reactive Against Recombinant Protein. Western Blot detection against Immunogen (34.1 KDa) .
Storage Buffer	In 1x PBS, pH 7.4
Storage Instruction	Store at -20°C or lower. Aliquot to avoid repeated freezing and thawing.

Applications

- Western Blot (Cell lysate)

PCDHA6 monoclonal antibody (M05), clone 1A3 Western Blot analysis of PCDHA6 expression in K-562 (Cat # L009V1).

[Protocol Download](#)

- Western Blot (Recombinant protein)

[Protocol Download](#)

- Sandwich ELISA (Recombinant protein)

Detection limit for recombinant GST tagged PCDHA6 is approximately 0.3ng/ml as a capture antibody.

[Protocol Download](#)

- ELISA

Gene Info — PCDHA6

Entrez GeneID [56142](#)

GeneBank Accession#	NM_018909
Protein Accession#	NP_061732
Gene Name	PCDHA6
Gene Alias	CNR2, CNRN2, CNRS2, CRNR2, PCDH-ALPHA6
Gene Description	protocadherin alpha 6
Omim ID	606312
Gene Ontology	Hyperlink
Gene Summary	<p>This gene is a member of the protocadherin alpha gene cluster, one of three related gene clusters tandemly linked on chromosome five that demonstrate an unusual genomic organization similar to that of B-cell and T-cell receptor gene clusters. The alpha gene cluster is composed of 15 cadherin superfamily genes related to the mouse CNR genes and consists of 13 highly similar and 2 more distantly related coding sequences. The tandem array of 15 N-terminal exons, or variable exons, are followed by downstream C-terminal exons, or constant exons, which are shared by all genes in the cluster. The large, uninterrupted N-terminal exons each encode six cadherin ectodomains while the C-terminal exons encode the cytoplasmic domain. These neural cadherin-like cell adhesion proteins are integral plasma membrane proteins that most likely play a critical role in the establishment and function of specific cell-cell connections in the brain. Alternative splicing has been observed and additional variants have been suggested but their full-length nature has yet to be determined. [provided by RefSeq]</p>
Other Designations	KIAA0345-like 8