

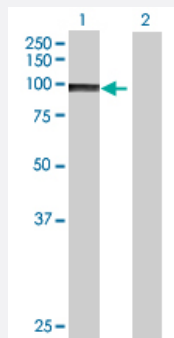
MaxPab®

# PCDHA8 MaxPab mouse polyclonal antibody (B01P)

Catalog # H00056140-B01P

Size 50 ug

## Applications



### Western Blot (Transfected lysate)

Western Blot analysis of PCDHA8 expression in transfected 293T cell line ([H00056140-T01](#)) by PCDHA8 MaxPab polyclonal antibody.

Lane 1: PCDHA8 transfected lysate(89.54 kDa).

Lane 2: Non-transfected lysate.

## Specification

### Product Description

Mouse polyclonal antibody raised against a full-length human PCDHA8 protein.

### Immunogen

PCDHA8 (NP\_114062.1, 1 a.a. ~ 814 a.a) full-length human protein.

### Sequence

MDYHWRGELGSWRLLLLLLLLAAWKVGSGQLHYSVPEEAKHGTFVGRIQDLGLELAELVPRLF  
RVASKRHRDLLEVSLQNGILFVNSRIDREELCGRSAECSIHLEIVDRPLQVFHVDVEVKDVNDNP  
PVFRVKDQKLFVSESRMPDSRFPLEGASDADVGANSVLTYRLSSHDFMLDVNSKNENDENKLVE  
LVLRKSLDREDAPAHHLFLTATDGGKPELTGTVQLLVTVLDVNDNAPTFEQSEYEVRIENADNG  
TTVIKLNASDPDEGANGAISYSFNSLVETMVIDHFSIDRNTGEMIRGNLDFEQENLYKILIDATDKGH  
PPMAGHCTVLVRILDKNDNVPEIALTSLSLPVREDAQFGTVIALISVNDLDSGANGQVTCSLMPHV  
PFLKLVSTFKNYSLVLDSDALDRERVSAYELVVTARDGGSPSLWATASLSVEVADVNDNAPAFQA  
PEYTVFVKENPPGCHIFTVSARDADAQENALVSYSLVERRVGERSLSSYISVHTESGKVYALQPL  
DHEELELLQFQVSARDAGVPPLGSNVTLQVFVLDENDNAPALLEPRVGGTGAASKLVPRSVG  
AGHVVAKVRAVDADSGYNWLSYELQPAASSPRIPFRVGLYTGEISTTRVLDEADSPRHRLVLV  
KDHGEPALTATATVLVSLVESGQAPKASSRQSAGVLGPEAALVDNVYLIICAVSSLLVLTLLLY  
TALRCSALPTEGGCRAGKPTLVCSSAVGSWSYSQQQPQRVCSGEGPPKTDLMAFSPCLPPDL  
GSVDVGEEQDLNVDHGLKVSPFKFRTHKFYLWKL

### Host

Mouse

### Reactivity

Human

Interspecies Antigen Sequence	Rat (80)
Quality Control Testing	Antibody reactive against mammalian transfected lysate.
Storage Buffer	In 1x PBS, pH 7.4
Storage Instruction	Store at -20°C or lower. Aliquot to avoid repeated freezing and thawing.

## Applications

- Western Blot (Transfected lysate)

Western Blot analysis of PCDHA8 expression in transfected 293T cell line ([H00056140-T01](#)) by PCDHA8 MaxPab polyclonal antibody.

Lane 1: PCDHA8 transfected lysate(89.54 KDa).

Lane 2: Non-transfected lysate.

[Protocol Download](#)

## Gene Info — PCDHA8

Entrez GeneID	<a href="#">56140</a>
GeneBank Accession#	<a href="#">NM_031856.1</a>
Protein Accession#	<a href="#">NP_114062.1</a>
Gene Name	PCDHA8
Gene Alias	PCDH-ALPHA8
Gene Description	protocadherin alpha 8
Omim ID	<a href="#">606314</a>
Gene Ontology	<a href="#">Hyperlink</a>

**Gene Summary**

This gene is a member of the protocadherin alpha gene cluster, one of three related gene clusters tandemly linked on chromosome five that demonstrate an unusual genomic organization similar to that of B-cell and T-cell receptor gene clusters. The alpha gene cluster is composed of 15 cadherin superfamily genes related to the mouse CNR genes and consists of 13 highly similar and 2 more distantly related coding sequences. The tandem array of 15 N-terminal exons, or variable exons, are followed by downstream C-terminal exons, or constant exons, which are shared by all genes in the cluster. The large, uninterrupted N-terminal exons each encode six cadherin ectodomains while the C-terminal exons encode the cytoplasmic domain. These neural cadherin-like cell adhesion proteins are integral plasma membrane proteins that most likely play a critical role in the establishment and function of specific cell-cell connections in the brain. Alternative splicing has been observed and additional variants have been suggested but their full-length nature has yet to be determined. [provided by RefSeq]

**Other Designations**

KIAA0345-like 6