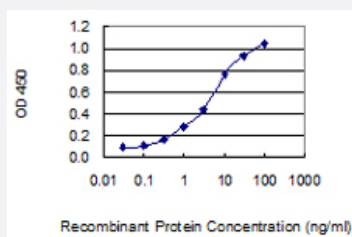


PCDHA11 monoclonal antibody (M01), clone 4E10

Catalog # H00056138-M01

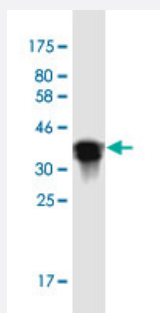
Size 100 ug

Applications



Sandwich ELISA (Recombinant protein)

Detection limit for recombinant GST tagged PCDHA11 is 0.1 ng/ml as a capture antibody.



Western Blot detection against Immunogen (35.53 KDa) .

Specification

Product Description

Mouse monoclonal antibody raised against a partial recombinant PCDHA11.

Immunogen

PCDHA11 (NP_061725, 203 a.a. ~ 291 a.a) partial recombinant protein with GST tag. MW of the GST tag alone is 26 KDa.

Sequence

EKTPELNLLLTATDGGKPELTGTVRLLVQVLDVNDNDPEFDKSEYKVSLMENAAKETLVKLKNATDRDEGVNGEVITYSLMSIKPNGRHL

Host

Mouse

Reactivity

Human

Interspecies Antigen Sequence

Mouse (82); Rat (83)

Isotype

IgG2a Kappa

Quality Control Testing

Antibody Reactive Against Recombinant Protein.
Western Blot detection against Immunogen (35.53 KDa) .

Storage Buffer

In 1x PBS, pH 7.4

Storage Instruction

Store at -20°C or lower. Aliquot to avoid repeated freezing and thawing.

Applications

- Western Blot (Recombinant protein)

[Protocol Download](#)

- Sandwich ELISA (Recombinant protein)

Detection limit for recombinant GST tagged PCDHA11 is 0.1 ng/ml as a capture antibody.

[Protocol Download](#)

- ELISA

Gene Info — PCDHA11

Entrez GeneID[56138](#)**GeneBank Accession#**[NM_018902](#)**Protein Accession#**[NP_061725](#)**Gene Name**

PCDHA11

Gene Alias

CNR7, CNRN7, CNRS7, CRNR7, PCDH-ALPHA11

Gene Description

protocadherin alpha 11

Omim ID[606317](#)**Gene Ontology**[Hyperlink](#)

Gene Summary

This gene is a member of the protocadherin alpha gene cluster, one of three related gene clusters tandemly linked on chromosome five that demonstrate an unusual genomic organization similar to that of B-cell and T-cell receptor gene clusters. The alpha gene cluster is composed of 15 cadherin superfamily genes related to the mouse CNR genes and consists of 13 highly similar and 2 more distantly related coding sequences. The tandem array of 15 N-terminal exons, or variable exons, are followed by downstream C-terminal exons, or constant exons, which are shared by all genes in the cluster. The large, uninterrupted N-terminal exons each encode six cadherin ectodomains while the C-terminal exons encode the cytoplasmic domain. These neural cadherin-like cell adhesion proteins are integral plasma membrane proteins that most likely play a critical role in the establishment and function of specific cell-cell connections in the brain. Alternative splicing has been observed and additional variants have been suggested but their full-length nature has yet to be determined. [provided by RefSeq]

Other Designations

KIAA0345-like 3|ortholog of mouse CNR7