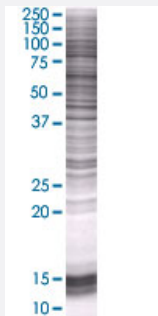


PCDHB2 293T Cell Transient Overexpression Lysate(Denatured)

Catalog # H00056133-T01

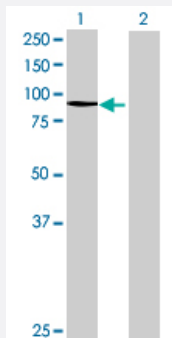
Size 100 uL

Applications



SDS-PAGE Gel

PCDHB2 transfected lysate.



Western Blot

Lane 1: PCDHB2 transfected lysate (87.89 KDa)

Lane 2: Non-transfected lysate.

Specification

Transfected Cell Line	293T
Plasmid	pCMV-PCDHB2 full-length
Host	Human
Theoretical MW (kDa)	87.89
Interspecies Antigen Sequence	Mouse (76)

Quality Control Testing

Transient overexpression cell lysate was tested with Anti-PCDHB2 antibody ([H00056133-B01](#)) by Western Blots.
SDS-PAGE Gel
PCDHB2 transfected lysate.
Western Blot
Lane 1: PCDHB2 transfected lysate (87.89 KDa)
Lane 2: Non-transfected lysate.

Storage Buffer

1X Sample Buffer (50 mM Tris-HCl, 2% SDS, 10% glycerol, 300 mM 2-mercaptoethanol, 0.01% Bromophenol blue)

Storage Instruction

Store at -80°C. Aliquot to avoid repeated freezing and thawing.

Applications

- Western Blot

Gene Info — PCDHB2

Entrez GeneID[56133](#)**GeneBank Accession#**[BC098575.1](#)**Protein Accession#**[AAH98575.1](#)**Gene Name**

PCDHB2

Gene Alias

MGC111392, PCDH-BETA2

Gene Description

protocadherin beta 2

Omim ID[606328](#)**Gene Ontology**[Hyperlink](#)**Gene Summary**

This gene is a member of the protocadherin beta gene cluster, one of three related gene clusters tandemly linked on chromosome five. The gene clusters demonstrate an unusual genomic organization similar to that of B-cell and T-cell receptor gene clusters. The beta cluster contains 16 genes and 3 pseudogenes, each encoding 6 extracellular cadherin domains and a cytoplasmic tail that deviates from others in the cadherin superfamily. The extracellular domains interact in a homophilic manner to specify differential cell-cell connections. Unlike the alpha and gamma clusters, the transcripts from these genes are made up of only one large exon, not sharing common 3' exons as expected. These neural cadherin-like cell adhesion proteins are integral plasma membrane proteins. Their specific functions are unknown but they most likely play a critical role in the establishment and function of specific cell-cell neural connections. [provided by RefSeq]

Other Designations

-