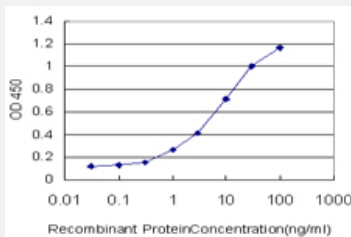


PCDHB3 monoclonal antibody (M01), clone 4F6

Catalog # H00056132-M01

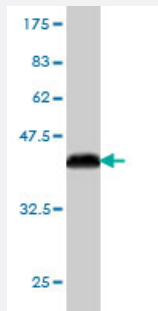
Size 100 ug

Applications



Sandwich ELISA (Recombinant protein)

Detection limit for recombinant GST tagged PCDHB3 is approximately 0.3ng/ml as a capture antibody.



Western Blot detection against Immunogen (36.52 KDa) .

Specification

Product Description	Mouse monoclonal antibody raised against a partial recombinant PCDHB3.
Immunogen	PCDHB3 (NP_061760, 284 a.a. ~ 381 a.a) partial recombinant protein with GST tag. MW of the GST tag alone is 26 KDa.
Sequence	ASEEIRKTFQLNPITGDMQLVKYLNFEAINSYEVDIEAKDGGGLSGKSTVIVQVVDVNDNPPELTLS SVNSPIPENSGETVLAVFSVSDLDSDGNRV
Host	Mouse
Reactivity	Human

Interspecies Antigen Sequence	Mouse (79); Rat (79)
Isotype	IgG2a Kappa
Quality Control Testing	Antibody Reactive Against Recombinant Protein. Western Blot detection against Immunogen (36.52 KDa) .
Storage Buffer	In 1x PBS, pH 7.4
Storage Instruction	Store at -20°C or lower. Aliquot to avoid repeated freezing and thawing.

Applications

- Western Blot (Recombinant protein)

[Protocol Download](#)

- Sandwich ELISA (Recombinant protein)

Detection limit for recombinant GST tagged PCDHB3 is approximately 0.3ng/ml as a capture antibody.

[Protocol Download](#)

- ELISA

Gene Info — PCDHB3

Entrez GeneID	56132
GeneBank Accession#	NM_018937
Protein Accession#	NP_061760
Gene Name	PCDHB3
Gene Alias	PCDH-BETA3
Gene Description	protocadherin beta 3
Omim ID	606329
Gene Ontology	Hyperlink

Gene Summary

This gene is a member of the protocadherin beta gene cluster, one of three related gene clusters tandemly linked on chromosome five. The gene clusters demonstrate an unusual genomic organization similar to that of B-cell and T-cell receptor gene clusters. The beta cluster contains 16 genes and 3 pseudogenes, each encoding 6 extracellular cadherin domains and a cytoplasmic tail that deviates from others in the cadherin superfamily. The extracellular domains interact in a homophilic manner to specify differential cell-cell connections. Unlike the alpha and gamma clusters, the transcripts from these genes are made up of only one large exon, not sharing common 3' exons as expected. These neural cadherin-like cell adhesion proteins are integral plasma membrane proteins. Their specific functions are unknown but they most likely play a critical role in the establishment and function of specific cell-cell neural connections. [provided by RefSeq]

Other Designations

-