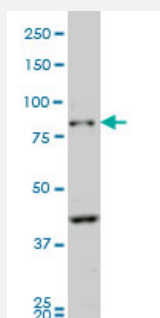


# PCDHB10 monoclonal antibody (M07), clone 4C4

Catalog # H00056126-M07

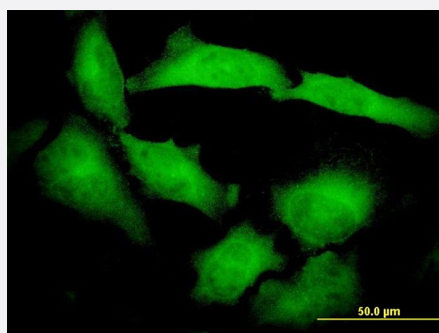
Size 100 ug

## Applications



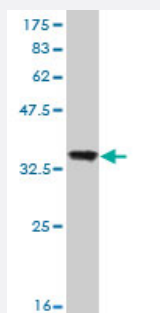
### Western Blot (Cell lysate)

PCDHB10 monoclonal antibody (M07), clone 4C4 Western Blot analysis of PCDHB10 expression in NIH/3T3 ( Cat # L018V1 ).



### Immunofluorescence

Immunofluorescence of monoclonal antibody to PCDHB10 on HeLa cell. [antibody concentration 10 ug/ml]



Western Blot detection against Immunogen (36.63 KDa) .

## Specification

### Product Description

Mouse monoclonal antibody raised against a partial recombinant PCDHB10.

<b>Immunogen</b>	PCDHB10 (NP_061753, 27 a.a. ~ 125 a.a) partial recombinant protein with GST tag. MW of the GST tag alone is 26 KDa.
<b>Sequence</b>	GSGFGRYSVTEETEEKGSFVVNLAKDLGLAEGELAARGTRVVSDDNKQYLLLDSTGNLLTNEKL DREKLCGPKEPCMLYFQILMDDPFQYRAELVRD
<b>Host</b>	Mouse
<b>Reactivity</b>	Human, Mouse
<b>Isotype</b>	IgG2a Kappa
<b>Quality Control Testing</b>	Antibody Reactive Against Recombinant Protein. Western Blot detection against Immunogen (36.63 KDa) .
<b>Storage Buffer</b>	In 1x PBS, pH 7.4
<b>Storage Instruction</b>	Store at -20°C or lower. Aliquot to avoid repeated freezing and thawing.

## Applications

- Western Blot (Cell lysate)

PCDHB10 monoclonal antibody (M07), clone 4C4 Western Blot analysis of PCDHB10 expression in NIH/3T3 ( Cat # L018V1 ).

[Protocol Download](#)

- Western Blot (Recombinant protein)

[Protocol Download](#)

- ELISA

- Immunofluorescence

Immunofluorescence of monoclonal antibody to PCDHB10 on HeLa cell. [antibody concentration 10 ug/ml]

## Gene Info — PCDHB10

<b>Entrez GeneID</b>	<a href="#">56126</a>
<b>GeneBank Accession#</b>	<a href="#">NM_018930</a>
<b>Protein Accession#</b>	<a href="#">NP_061753</a>
<b>Gene Name</b>	PCDHB10

Gene Alias	PCDH-BETA10, PCHB10
Gene Description	protocadherin beta 10
Omim ID	<a href="#">606336</a>
Gene Ontology	<a href="#">Hyperlink</a>
Gene Summary	<p>This gene is a member of the protocadherin beta gene cluster, one of three related gene clusters tandemly linked on chromosome five. The gene clusters demonstrate an unusual genomic organization similar to that of B-cell and T-cell receptor gene clusters. The beta cluster contains 16 genes and 3 pseudogenes, each encoding 6 extracellular cadherin domains and a cytoplasmic tail that deviates from others in the cadherin superfamily. The extracellular domains interact in a homophilic manner to specify differential cell-cell connections. Unlike the alpha and gamma clusters, the transcripts from these genes are made up of only one large exon, not sharing common 3' exons as expected. These neural cadherin-like cell adhesion proteins are integral plasma membrane proteins. Their specific functions are unknown but they most likely play a critical role in the establishment and function of specific cell-cell neural connections. [provided by RefSeq]</p>
Other Designations	-

## Publication Reference

- [Gene expression profiling-based identification of cell-surface targets for developing multimeric ligands in pancreatic cancer.](#)

Balagurunathan Y, Morse DL, Hostetter G, Shanmugam V, Stafford P, Shack S, Pearson J, Trissal M, Demeure MJ, Von Hoff DD, Hruby VJ, Gillies RJ, Han H.

Molecular Cancer Therapeutics 2008 Sep; 7(9):3071.

Application: IHC-P, Human, Human pancreatic cancer