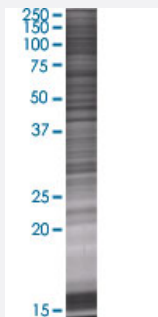


# PCDHGA11 293T Cell Transient Overexpression Lysate(Denatured)

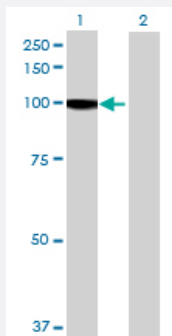
Catalog # H00056105-T01      Size 100 uL

## Applications



### SDS-PAGE Gel

PCDHGA11 transfected lysate.



### Western Blot

Lane 1: PCDHGA11 transfected lysate ( 92.18 KDa)

Lane 2: Non-transfected lysate.

## Specification

Transfected Cell Line	293T
Plasmid	pCMV-PCDHGA11 full-length
Host	Human
Theoretical MW (kDa)	92.18
Interspecies Antigen Sequence	Mouse (79); Rat (80)

## Quality Control Testing

Transient overexpression cell lysate was tested with Anti-PCDHGA11 antibody ([H00056105-B01](#)) by Western Blots.  
SDS-PAGE Gel  
PCDHGA11 transfected lysate.  
Western Blot  
Lane 1: PCDHGA11 transfected lysate ( 92.18 KDa)  
Lane 2: Non-transfected lysate.

## Storage Buffer

1X Sample Buffer (50 mM Tris-HCl, 2% SDS, 10% glycerol, 300 mM 2-mercaptoethanol, 0.01% Bromophenol blue)

## Storage Instruction

Store at -80°C. Aliquot to avoid repeated freezing and thawing.

## Applications

- Western Blot

## Gene Info — PCDHGA11

## Entrez GeneID

[56105](#)

## GeneBank Accession#

[NM\\_032091.1](#)

## Protein Accession#

[NP\\_114480.1](#)

## Gene Name

PCDHGA11

## Gene Alias

PCDH-GAMMA-A11

## Gene Description

protocadherin gamma subfamily A, 11

## Omim ID

[606298](#)

## Gene Ontology

[Hyperlink](#)

## Gene Summary

This gene is a member of the protocadherin gamma gene cluster, one of three related clusters tandemly linked on chromosome five. These gene clusters have an immunoglobulin-like organization, suggesting that a novel mechanism may be involved in their regulation and expression. The gamma gene cluster includes 22 genes divided into 3 subfamilies. Subfamily A contains 12 genes, subfamily B contains 7 genes and 2 pseudogenes, and the more distantly related subfamily C contains 3 genes. The tandem array of 22 large, variable region exons are followed by a constant region, containing 3 exons shared by all genes in the cluster. Each variable region exon encodes the extracellular region, which includes 6 cadherin ectodomains and a transmembrane region. The constant region exons encode the common cytoplasmic region. These neural cadherin-like cell adhesion proteins most likely play a critical role in the establishment and function of specific cell-cell connections in the brain. Alternative splicing has been described for the gamma cluster genes. [provided by RefSeq]

Other Designations

-