

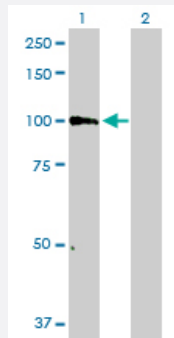
MaxPab®

PCDHGB6 purified MaxPab mouse polyclonal antibody (B01P)

Catalog # H00056100-B01P

Size 50 ug

Applications



Western Blot (Transfected lysate)

Western Blot analysis of PCDHGB6 expression in transfected 293T cell line ([H00056100-T01](#)) by PCDHGB6 MaxPab polyclonal antibody.

Lane 1: PCDHGB6 transfected lysate(90.2 kDa).

Lane 2: Non-transfected lysate.

Specification

Product Description	Mouse polyclonal antibody raised against a full-length human PCDHGB6 protein.
Immunogen	PCDHGB6 (NP_115271.1, 1 a.a. ~ 820 a.a) full-length human protein.
Sequence	<p>MGGSCAQRRRAGPRQVLFPLLLPLFYPTLSEPIRYSIPEELAKGSVVGNLAKDLGLSVLDVSARKL</p> <p>RVSAEKLHFSVDAESGDLLVKNRIDREQICKERRRCELQLEAVVENPLNIFHVIVIEDVNDHAPQ</p> <p>FDKKEIHLEIFESASAGTRLSDPATDPDININSIKDYKINSNPYFLMVRVNSDGGKYPELSLEKLL</p> <p>DREEQRSHSLILTALDGGDPPRSATAHIEISVKDTNDNPPVFSRDEYRISLSENLPGPSVLQVTAT</p> <p>DQDEGVNAEINYFRSTAQSTKHMFSLEDEKTMKNNQSFDVEDVERYTMEVEAKDGGGLSTQC</p> <p>KVIEILDENDNSPEIITSLSDQILENSPPGMVVALFKTRDLDFGGNGEVRNCNIETDIPFKYSSSNYY</p> <p>KLVTGDALDREQTPEYNVTIVATDRGKPLSSSRISITLYVADINDNAPVFDQTSYVVHVAENPPG</p> <p>ASIAQVSASDPDLGLNGHISYSIVASDLEPLAVSSYVSVSAQSGVVFAQRAFDHEQLRAFALTLQA</p> <p>RDHGSPTLSANVSLRVLVGDRNDNAPRVLYPALGPDGSAFFDMVPRSAEPGYLVTKVVAVDAD</p> <p>SGHNAWLSYHVLQASEPGLFSLGLRTGEVRTARALGDRDAARQRLLVAVRDGGQPPLSATATLH</p> <p>LVFADNLQEILPDLSDRPVLSDPQAEQLQFYLVVALALISVLFLAVILAIALRLRRSLSPATWDCFHP</p> <p>GLCVKSGPVVPPNYSEGTLPPSYNLCIAHTGTKEFNFLKCSVPLHSNEDMVCSVSPGALIPPHGG</p> <p>EDLTSHPETLTSSVSFSFLCVMLIVY</p>
Host	Mouse
Reactivity	Human

Interspecies Antigen Sequence	Mouse (80); Rat (81)
Quality Control Testing	Antibody reactive against mammalian transfected lysate.
Storage Buffer	In 1x PBS, pH 7.4
Storage Instruction	Store at -20°C or lower. Aliquot to avoid repeated freezing and thawing.

Applications

- Western Blot (Transfected lysate)

Western Blot analysis of PCDHGB6 expression in transfected 293T cell line ([H00056100-T01](#)) by PCDHGB6 MaxPab polyclonal antibody.

Lane 1: PCDHGB6 transfected lysate(90.2 KDa).

Lane 2: Non-transfected lysate.

[Protocol Download](#)

Gene Info — PCDHGB6

Entrez GeneID	56100
GeneBank Accession#	NM_032100.1
Protein Accession#	NP_115271.1
Gene Name	PCDHGB6
Gene Alias	PCDH-GAMMA-B6
Gene Description	protocadherin gamma subfamily B, 6
Omim ID	606303
Gene Ontology	Hyperlink

Gene Summary

This gene is a member of the protocadherin gamma gene cluster, one of three related clusters tandemly linked on chromosome five. These gene clusters have an immunoglobulin-like organization, suggesting that a novel mechanism may be involved in their regulation and expression. The gamma gene cluster includes 22 genes divided into 3 subfamilies. Subfamily A contains 12 genes, subfamily B contains 7 genes and 2 pseudogenes, and the more distantly related subfamily C contains 3 genes. The tandem array of 22 large, variable region exons are followed by a constant region, containing 3 exons shared by all genes in the cluster. Each variable region exon encodes the extracellular region, which includes 6 cadherin ectodomains and a transmembrane region. The constant region exons encode the common cytoplasmic region. These neural cadherin-like cell adhesion proteins most likely play a critical role in the establishment and function of specific cell-cell connections in the brain. Alternative splicing has been described for the gamma cluster genes. [provided by RefSeq]

Other Designations

-