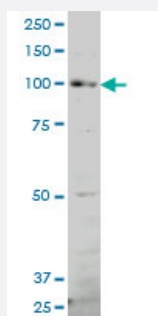


# PCDHGB7 polyclonal antibody (A01)

Catalog # H00056099-A01

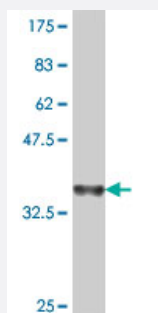
Size 50 uL

## Applications



### Western Blot (Cell lysate)

PCDHGB7 polyclonal antibody (A01), Lot # 051123JC01 Western Blot analysis of PCDHGB7 expression in Jurkat ( Cat # L017V1 ).



Western Blot detection against Immunogen (36.34 KDa) .

## Specification

Product Description	Mouse polyclonal antibody raised against a partial recombinant PCDHGB7.
Immunogen	PCDHGB7 (NP_061750, 199 a.a. ~ 291 a.a) partial recombinant protein with GST tag.
Sequence	TLDRETQSAHHLVLTALDGGDPPRSGTAQIRILVIDANDNPPVFSQDVYRVSLREDVPPGTSILRVK ATDQDEGINSEITYSFFGVADKAQHV
Host	Mouse
Reactivity	Human
Interspecies Antigen Sequence	Mouse (75); Rat (79)

**Quality Control Testing**

Antibody Reactive Against Recombinant Protein.  
Western Blot detection against Immunogen (36.34 KDa) .

**Storage Buffer**

50 % glycerol

**Storage Instruction**

Store at -20°C or lower. Aliquot to avoid repeated freezing and thawing.

## Applications

- Western Blot (Cell lysate)

PCDHGB7 polyclonal antibody (A01), Lot # 051123JC01 Western Blot analysis of PCDHGB7 expression in Jurkat ( Cat # L017V1 ).

[Protocol Download](#)

- Western Blot (Recombinant protein)

[Protocol Download](#)

- ELISA

## Gene Info — PCDHGB7

**Entrez GeneID**

[56099](#)

**GeneBank Accession#**

[NM\\_018927](#)

**Protein Accession#**

[NP\\_061750](#)

**Gene Name**

PCDHGB7

**Gene Alias**

ME6, PCDH-GAMMA-B7

**Gene Description**

protocadherin gamma subfamily B, 7

**Omim ID**

[606304](#)

**Gene Ontology**

[Hyperlink](#)

**Gene Summary**

This gene is a member of the protocadherin gamma gene cluster, one of three related clusters tandemly linked on chromosome five. These gene clusters have an immunoglobulin-like organization, suggesting that a novel mechanism may be involved in their regulation and expression. The gamma gene cluster includes 22 genes divided into 3 subfamilies. Subfamily A contains 12 genes, subfamily B contains 7 genes and 2 pseudogenes, and the more distantly related subfamily C contains 3 genes. The tandem array of 22 large, variable region exons are followed by a constant region, containing 3 exons shared by all genes in the cluster. Each variable region exon encodes the extracellular region, which includes 6 cadherin ectodomains and a transmembrane region. The constant region exons encode the common cytoplasmic region. These neural cadherin-like cell adhesion proteins most likely play a critical role in the establishment and function of specific cell-cell connections in the brain. Alternative splicing has been described for the gamma cluster genes. [provided by RefSeq]

**Other Designations**

cadherin ME6