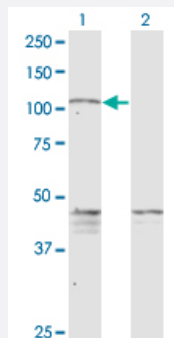


PCDHGC5 monoclonal antibody (M08), clone 3A6

Catalog # H00056097-M08

Size 100 ug

Applications

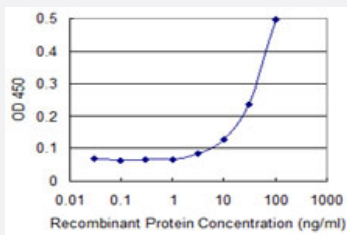


Western Blot (Transfected lysate)

Western Blot analysis of PCDHGC5 expression in transfected 293T cell line by PCDHGC5 monoclonal antibody (M08), clone 3A6.

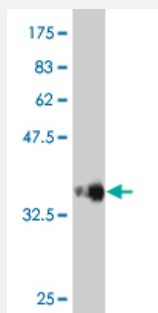
Lane 1: PCDHGC5 transfected lysate (Predicted MW: 95.2 KDa).

Lane 2: Non-transfected lysate.



Sandwich ELISA (Recombinant protein)

Detection limit for recombinant GST tagged PCDHGC5 is 0.1 ng/ml as a capture antibody.



Western Blot detection against Immunogen (37.73 KDa) .

Specification

Product Description

Mouse monoclonal antibody raised against a partial recombinant PCDHGC5.

Immunogen	PCDHGC5 (NP_061752, 467 a.a. ~ 575 a.a) partial recombinant protein with GST tag. MW of the GST tag alone is 26 KDa.
Sequence	RPPGSLCTVAASDPDTGDNARLTYSIVGNQVQGAPASSFVYVNPEDGRIFAQRTFDYELLQMLQIVVGVRDSGSPPLHANTSLHVFVLDENDNAPAVLHPRPDWEHSA
Host	Mouse
Reactivity	Human
Interspecies Antigen Sequence	Mouse (91); Rat (91)
Isotype	IgG2a Kappa
Quality Control Testing	Antibody Reactive Against Recombinant Protein. Western Blot detection against Immunogen (37.73 KDa) .
Storage Buffer	In 1x PBS, pH 7.4
Storage Instruction	Store at -20°C or lower. Aliquot to avoid repeated freezing and thawing.

Applications

- Western Blot (Transfected lysate)

Western Blot analysis of PCDHGC5 expression in transfected 293T cell line by PCDHGC5 monoclonal antibody (M08), clone 3A6.

Lane 1: PCDHGC5 transfected lysate (Predicted MW: 95.2 KDa).

Lane 2: Non-transfected lysate.

[Protocol Download](#)

- Western Blot (Recombinant protein)

[Protocol Download](#)

- Sandwich ELISA (Recombinant protein)

Detection limit for recombinant GST tagged PCDHGC5 is 0.1 ng/ml as a capture antibody.

[Protocol Download](#)

- ELISA

Gene Info — PCDHGC5

Entrez GeneID	56097
GeneBank Accession#	NM_018929
Protein Accession#	NP_061752
Gene Name	PCDHGC5
Gene Alias	MGC138286, MGC138288, PCDH-GAMMA-C5
Gene Description	protocadherin gamma subfamily C, 5
Omim ID	606306
Gene Ontology	Hyperlink
Gene Summary	<p>This gene is a member of the protocadherin gamma gene cluster, one of three related clusters tandemly linked on chromosome five. These gene clusters have an immunoglobulin-like organization, suggesting that a novel mechanism may be involved in their regulation and expression. The gamma gene cluster includes 22 genes divided into 3 subfamilies. Subfamily A contains 12 genes, subfamily B contains 7 genes and 2 pseudogenes, and the more distantly related subfamily C contains 3 genes. The tandem array of 22 large, variable region exons are followed by a constant region, containing 3 exons shared by all genes in the cluster. Each variable region exon encodes the extracellular region, which includes 6 cadherin ectodomains and a transmembrane region. The constant region exons encode the common cytoplasmic region. These neural cadherin-like cell adhesion proteins most likely play a critical role in the establishment and function of specific cell-cell connections in the brain. Alternative splicing has been described for the gamma cluster genes. [provided by RefSeq]</p>
Other Designations	OTTHUMP00000160024