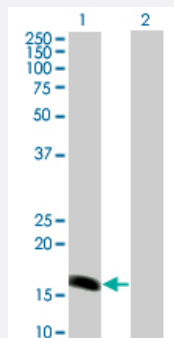


# BARX1 monoclonal antibody (M01), clone 1E7

Catalog # H00056033-M01

Size 100 ug

## Applications

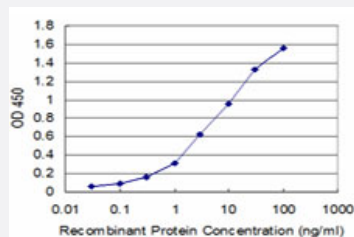


### Western Blot (Transfected lysate)

Western Blot analysis of BARX1 expression in transfected 293T cell line by BARX1 monoclonal antibody (M01), clone 1E7.

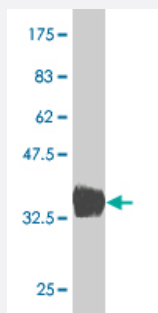
Lane 1: BARX1 transfected lysate (11.5 kDa).

Lane 2: Non-transfected lysate.



### Sandwich ELISA (Recombinant protein)

Detection limit for recombinant GST tagged BARX1 is approximately 0.3 ng/ml as a capture antibody.



Western Blot detection against Immunogen (36.74 kDa).

## Specification

### Product Description

Mouse monoclonal antibody raised against a full length recombinant BARX1.

<b>Immunogen</b>	BARX1 (AAH09458, 1 a.a. ~ 100 a.a) full-length recombinant protein with GST tag. MW of the GST tag alone is 26 KDa.
<b>Sequence</b>	MGLEKRFEKQKYLSTPDRIDLAESLGLSQLQVKTWYQNRRMKWKKIVLQGGGLESPTKPKGRPK KNSIPTSEQLTEQERAKDAEKPAEVPGEPSDRSRED
<b>Host</b>	Mouse
<b>Reactivity</b>	Human
<b>Interspecies Antigen Sequence</b>	Mouse (95); Rat (97)
<b>Isotype</b>	IgG1 kappa
<b>Quality Control Testing</b>	Antibody Reactive Against Recombinant Protein. Western Blot detection against Immunogen (36.74 KDa) .
<b>Storage Buffer</b>	In 1x PBS, pH 7.4
<b>Storage Instruction</b>	Store at -20°C or lower. Aliquot to avoid repeated freezing and thawing.

## Applications

- Western Blot (Transfected lysate)

Western Blot analysis of BARX1 expression in transfected 293T cell line by BARX1 monoclonal antibody (M01), clone 1E7.

Lane 1: BARX1 transfected lysate(11.5 KDa).

Lane 2: Non-transfected lysate.

[Protocol Download](#)

- Western Blot (Recombinant protein)

[Protocol Download](#)

- Sandwich ELISA (Recombinant protein)

Detection limit for recombinant GST tagged BARX1 is approximately 0.3ng/ml as a capture antibody.

[Protocol Download](#)

- ELISA

## Gene Info — BARX1

Entrez GeneID	<a href="#">56033</a>
GeneBank Accession#	<a href="#">BC009458</a>
Protein Accession#	<a href="#">AAH09458</a>
Gene Name	BARX1
Gene Alias	-
Gene Description	BARX homeobox 1
Omim ID	<a href="#">603260</a>
Gene Ontology	<a href="#">Hyperlink</a>
Gene Summary	This gene encodes a member of the Bar subclass of homeobox transcription factors. Studies of the mouse and chick homolog suggest the encoded protein may play a role in developing teeth and craniofacial mesenchyme of neural crest origin. The protein may also be associated with differentiation of stomach epithelia. [provided by RefSeq]
Other Designations	BarH-like homeobox 1

## Disease

- [Cleft Lip](#)
- [Cleft Palate](#)
- [Tooth Abnormalities](#)