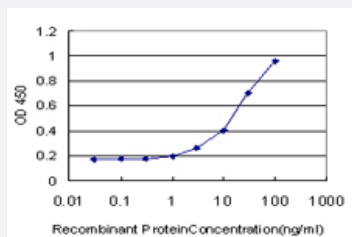


# C19orf10 monoclonal antibody (M03), clone 2D4

Catalog # H00056005-M03

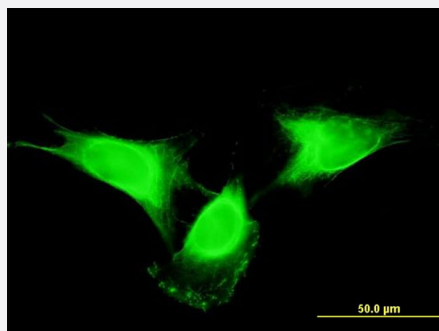
Size 100 ug

## Applications



### Sandwich ELISA (Recombinant protein)

Detection limit for recombinant GST tagged C19orf10 is approximately 1ng/ml as a capture antibody.



### Immunofluorescence

Immunofluorescence of monoclonal antibody to C19orf10 on HeLa cell .  
[antibody concentration 10 ug/ml]

## Specification

### Product Description

Mouse monoclonal antibody raised against a full length recombinant C19orf10.

### Immunogen

C19orf10 (AAH10129, 1 a.a. ~ 173 a.a) full-length recombinant protein with GST tag. MW of the GST tag alone is 26 KDa.

### Sequence

MAAPSGGWNGVGASLWAALLLGAVALRPAEAVSEPTTVAFDVRPGGVVHSFSHNVGPGDKYT  
CMFTYASQGGTNEQWQMSLGTSEDHGHFTCTWRPQGKSYLYFTQFKAIEVRGAEIEYAMAYSKA  
AFERESDVPLKTEEFVTKTAVAHPRGAFKAELSKLVAKASRTEL

### Host

Mouse

### Reactivity

Human

Interspecies Antigen Sequence	Mouse (83); Rat (78)
Isotype	IgG2a Kappa
Quality Control Testing	Antibody Reactive Against Recombinant Protein.
Storage Buffer	In 1x PBS, pH 7.4
Storage Instruction	Store at -20°C or lower. Aliquot to avoid repeated freezing and thawing.

## Applications

- Sandwich ELISA (Recombinant protein)

Detection limit for recombinant GST tagged C19orf10 is approximately 1ng/ml as a capture antibody.

[Protocol Download](#)

- ELISA

- Immunofluorescence

Immunofluorescence of monoclonal antibody to C19orf10 on HeLa cell . [antibody concentration 10 ug/ml]

## Gene Info — C19orf10

Entrez GeneID	<a href="#">56005</a>
GeneBank Accession#	<a href="#">BC010129</a>
Protein Accession#	<a href="#">AAH10129</a>
Gene Name	C19orf10
Gene Alias	EUROIMAGE1875335, IL25, IL27, IL27w, R33729_1, SF20
Gene Description	chromosome 19 open reading frame 10
Omim ID	<a href="#">606746</a>
Gene Ontology	<a href="#">Hyperlink</a>
Gene Summary	The protein encoded by this gene was previously thought to support proliferation of lymphoid cells and was considered an interleukin. However, this activity has not been reproducible and the function of this protein is currently unknown. [provided by RefSeq]

**Other Designations**

hypothetical protein LOC56005|interleukin 25|interleukin 27 working designation|stromal cell-derived growth factor

---

**Disease**

- [Genetic Predisposition to Disease](#)
- [Inflammatory Bowel Diseases](#)