

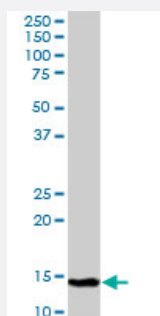
MaxPab®

## C19orf10 purified MaxPab mouse polyclonal antibody (B01P)

Catalog # H00056005-B01P

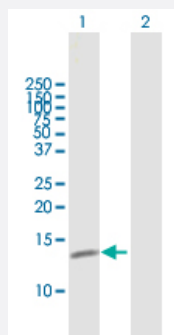
Size 50 ug

### Applications



#### Western Blot (Tissue lysate)

C19orf10 MaxPab polyclonal antibody. Western Blot analysis of C19orf10 expression in human placenta.

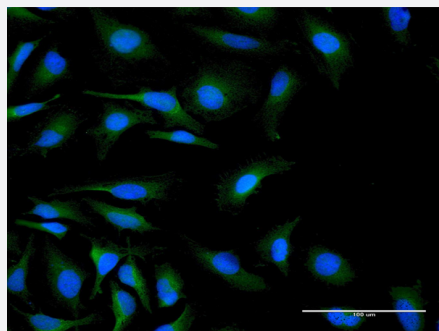


#### Western Blot (Transfected lysate)

Western Blot analysis of C19orf10 expression in transfected 293T cell line ([H00056005-T01](#)) by C19orf10 MaxPab polyclonal antibody.

Lane 1: C19orf10 transfected lysate(19.03 KDa).

Lane 2: Non-transfected lysate.



#### Immunofluorescence

Immunofluorescence of purified MaxPab antibody to C19orf10 on HeLa cell. [antibody concentration 10 ug/ml]

### Specification

#### Product Description

Mouse polyclonal antibody raised against a full-length human C19orf10 protein.

Immunogen	C19orf10 (NP_061980.1, 1 a.a. ~ 173 a.a) full-length human protein.
Sequence	MAAPSGGWNGVGASLWAALLLGAVALRPAEAVSEPTTVAFDVRPGGVVHSFSHNVGPGDKYT CMFTYASQGGTNEQWQMSLGTSEDHQHFTCTWVRPQGKSYLYFTQFKAIEVRGAEIEYAMAYSKA AFERESDVPLKTEEFVTKTAVAHHRPGAFKAELSKLVMKASRTEL
Host	Mouse
Reactivity	Human
Interspecies Antigen Sequence	Mouse (83); Rat (78)
Quality Control Testing	Antibody reactive against mammalian transfected lysate.
Storage Buffer	In 1x PBS, pH 7.4
Storage Instruction	Store at -20°C or lower. Aliquot to avoid repeated freezing and thawing.

## Applications

- Western Blot (Tissue lysate)

C19orf10 MaxPab polyclonal antibody. Western Blot analysis of C19orf10 expression in human placenta.

[Protocol Download](#)

- Western Blot (Transfected lysate)

Western Blot analysis of C19orf10 expression in transfected 293T cell line ([H00056005-T01](#)) by C19orf10 MaxPab polyclonal antibody.

Lane 1: C19orf10 transfected lysate(19.03 KDa).

Lane 2: Non-transfected lysate.

[Protocol Download](#)

- Immunofluorescence

Immunofluorescence of purified MaxPab antibody to C19orf10 on HeLa cell. [antibody concentration 10 ug/ml]

## Gene Info — C19orf10

Entrez GeneID	<a href="#">56005</a>
GeneBank Accession#	<a href="#">NM_019107.3</a>
Protein Accession#	<a href="#">NP_061980.1</a>

Gene Name	C19orf10
Gene Alias	EUROIMAGE1875335, IL25, IL27, IL27w, R33729_1, SF20
Gene Description	chromosome 19 open reading frame 10
Omim ID	<a href="#">606746</a>
Gene Ontology	<a href="#">Hyperlink</a>
Gene Summary	The protein encoded by this gene was previously thought to support proliferation of lymphoid cells and was considered an interleukin. However, this activity has not been reproducible and the function of this protein is currently unknown. [provided by RefSeq]
Other Designations	hypothetical protein LOC56005 interleukin 25 interleukin 27 working designation stromal cell-derived growth factor

## Disease

- [Genetic Predisposition to Disease](#)
- [Inflammatory Bowel Diseases](#)