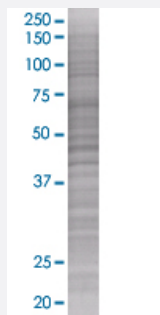


NXF2 293T Cell Transient Overexpression Lysate(Denatured)

Catalog # H00056001-T01

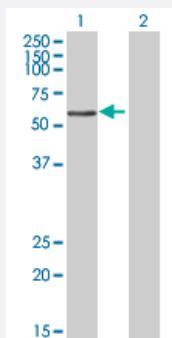
Size 100 uL

Applications



SDS-PAGE Gel

NXF2 transfected lysate.



Western Blot

Lane 1: NXF2 transfected lysate (71.6 KDa)

Lane 2: Non-transfected lysate.

Specification

Transfected Cell Line	293T
Plasmid	pCMV-NXF2 full-length
Host	Human
Theoretical MW (kDa)	68.97
Interspecies Antigen Sequence	Mouse (40); Rat (54)

Quality Control Testing

Transient overexpression cell lysate was tested with Anti-NXF2 antibody ([H00056001-B01](#)) by Western Blots.
SDS-PAGE Gel
NXF2 transfected lysate.
Western Blot
Lane 1: NXF2 transfected lysate (71.6 KDa)
Lane 2: Non-transfected lysate.

Storage Buffer

1X Sample Buffer (50 mM Tris-HCl, 2% SDS, 10% glycerol, 300 mM 2-mercaptoethanol, 0.01% Bromophenol blue)

Storage Instruction

Store at -80°C. Aliquot to avoid repeated freezing and thawing.

Applications

- Western Blot

Gene Info — NXF2

Entrez GeneID[56001](#)**GeneBank Accession#**[NM_017809.3](#)**Protein Accession#**[-](#)**Gene Name**

NXF2

Gene Alias

FLJ20416, TAPL-2

Gene Description

nuclear RNA export factor 2

Omim ID[300315](#)**Gene Ontology**[Hyperlink](#)**Gene Summary**

This gene is one of a family of nuclear RNA export factor genes. It encodes a protein that is involved in mRNA export, is located in the nucleoplasm, and is associated with the nuclear envelope. Alternative splicing seems to be a common mechanism in this gene family. Two variants have been found for this gene. [provided by RefSeq]

Other Designations

OTTHUMP00000023711|OTTHUMP00000023712|TAP like protein 2