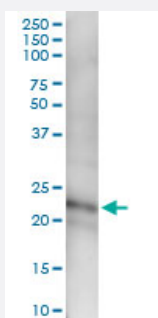


# CFC1 (Human) IP-WB Antibody Pair

Catalog # H00055997-PW1

Size 1 Set

## Applications



Immunoprecipitation of CFC1 transfected lysate using rabbit polyclonal anti-CFC1 and Protein A Magnetic Bead ([U0007](#)), and immunoblotted with mouse polyclonal anti-CFC1.

## Specification

<b>Product Description</b>	This IP-WB antibody pair set comes with one antibody for immunoprecipitation and another to detect the precipitated protein in western blot.
<b>Reactivity</b>	Human
<b>Interspecies Antigen Sequence</b>	Mouse (54); Rat (55)
<b>Quality Control Testing</b>	Immunoprecipitation-Western Blot (IP-WB) Immunoprecipitation of CFC1 transfected lysate using rabbit polyclonal anti-CFC1 and Protein A Magnetic Bead ( <a href="#">U0007</a> ), and immunoblotted with mouse polyclonal anti-CFC1.
<b>Supplied Product</b>	Antibody pair set content: 1. Antibody pair for IP: rabbit polyclonal anti-CFC1 (300 ul) 2. Antibody pair for WB: mouse polyclonal anti-CFC1 (50 ul)
<b>Storage Instruction</b>	Store reagents of the antibody pair set at -20°C or lower. Please aliquot to avoid repeated freeze thaw cycle. Reagents should be returned to -20°C storage immediately after use.

## Applications

- Immunoprecipitation-Western Blot

[Protocol Download](#)

## Gene Info — CFC1

**Entrez GeneID** [55997](#)

**Gene Name** CFC1

**Gene Alias** CRYPTIC, FLJ77897, HTX2, MGC133213

**Gene Description** crypto, FRL-1, cryptic family 1

**Omim ID** [217095](#) [605194](#) [605376](#)

**Gene Ontology** [Hyperlink](#)

**Gene Summary** This gene encodes a member of the epidermal growth factor (EGF)- Cripto, Frl-1, and Cryptic (CFC) family. EGF-CFC family member proteins share a variant EGF-like motif, a conserved cysteine-rich domain, and a C-terminal hydrophobic region. These proteins play key roles in intercellular signaling pathways during vertebrate embryogenesis. Mutations in this gene can cause autosomal visceral heterotaxy. This protein is involved in left-right asymmetric morphogenesis during organ development. [provided by RefSeq]

**Other Designations** cryptic

## Disease

- [Cleft Lip](#)
- [Cleft Palate](#)
- [Heart Defects](#)
- [Heart Septal Defects](#)