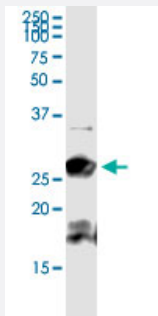


# BCAP29 (Human) IP-WB Antibody Pair

Catalog # H00055973-PW2

Size 1 Set

## Applications



Immunoprecipitation of BCAP29 transfected lysate using rabbit polyclonal anti-BCAP29 and Protein A Magnetic Bead ([U0007](#)), and immunoblotted with mouse purified polyclonal anti-BCAP29.

## Specification

<b>Product Description</b>	This IP-WB antibody pair set comes with one antibody for immunoprecipitation and another to detect the precipitated protein in western blot.
<b>Reactivity</b>	Human
<b>Interspecies Antigen Sequence</b>	Mouse (82); Rat (81)
<b>Quality Control Testing</b>	Immunoprecipitation-Western Blot (IP-WB) Immunoprecipitation of BCAP29 transfected lysate using rabbit polyclonal anti-BCAP29 and Protein A Magnetic Bead ( <a href="#">U0007</a> ), and immunoblotted with mouse purified polyclonal anti-BCAP29.
<b>Supplied Product</b>	Antibody pair set content: 1. Antibody pair for IP: rabbit polyclonal anti-BCAP29 (300 ul) 2. Antibody pair for WB: mouse purified polyclonal anti-BCAP29 (50 ug)
<b>Storage Instruction</b>	Store reagents of the antibody pair set at -20°C or lower. Please aliquot to avoid repeated freeze thaw cycle. Reagents should be returned to -20°C storage immediately after use.

## Applications

- Immunoprecipitation-Western Blot

[Protocol Download](#)

## Gene Info — BCAP29

Entrez GeneID	<a href="#">55973</a>
Gene Name	BCAP29
Gene Alias	BAP29, DKFZp686M2086
Gene Description	B-cell receptor-associated protein 29
Gene Ontology	<a href="#">Hyperlink</a>
Other Designations	B-cell receptor-associated protein BAP29

## Disease

- [Genetic Predisposition to Disease](#)
- [Narcolepsy](#)