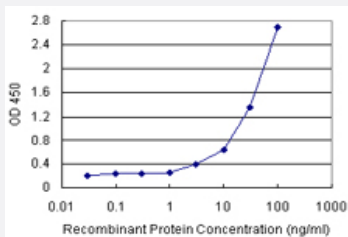


BCAP29 (Human) Matched Antibody Pair

Catalog # H00055973-AP11

Size 1 Set

Applications



Sandwich ELISA detection sensitivity ranging from 10 ng/ml to 100 ng/ml.

Specification

Product Description	This antibody pair set comes with a matched antibody pair to detect and quantify the protein level of human BCAP29.
Reactivity	Human
Interspecies Antigen Sequence	Mouse (82); Rat (81)
Quality Control Testing	Standard curve using recombinant protein (H00055973-P01) as an analyte. Sandwich ELISA detection sensitivity ranging from 10 ng/ml to 100 ng/ml.
Supplied Product	Antibody pair set content: 1. Capture antibody: rabbit MaxPab® affinity purified polyclonal anti-BCAP29 (100 ug) 2. Detection antibody: mouse monoclonal anti-BCAP29, IgG2a Kappa (20 ug) *Reagents are sufficient for at least 1-2 x 96 well plates using recommended protocols.
Storage Instruction	Store reagents of the antibody pair set at -20°C or lower. Please aliquot to avoid repeated freeze thaw cycle. Reagents should be returned to -20°C storage immediately after use.

Applications

- [ELISA Pair \(Recombinant protein\)](#)

[Protocol Download](#)

Gene Info — BCAP29

Entrez GeneID	55973
Gene Name	BCAP29
Gene Alias	BAP29, DKFZp686M2086
Gene Description	B-cell receptor-associated protein 29
Gene Ontology	Hyperlink
Other Designations	B-cell receptor-associated protein BAP29

Disease

- [Genetic Predisposition to Disease](#)
- [Narcolepsy](#)