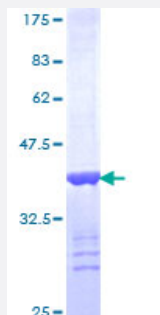


ERBB2IP (Human) Recombinant Protein (Q01)

Catalog # H00055914-Q01

Size 25 ug, 10 ug

Applications



Specification

Product Description	Human ERBB2IP partial ORF (NP_061165, 1272 a.a. - 1371 a.a.) recombinant protein with GST-tag at N-terminal.
Sequence	QGHELAKEIRVRVEKDPELGFSISGGVGGRGNPFRPDDDGIFVTRVQPEGPASKLLQPGDKIIQ ANGYSFINIEHGQAVSLLKTFQNTVELIVREVSS
Host	Wheat Germ (in vitro)
Theoretical MW (kDa)	36.74
Interspecies Antigen Sequence	Mouse (80)
Preparation Method	in vitro wheat germ expression system
Purification	Glutathione Sepharose 4 Fast Flow
Quality Control Testing	12.5% SDS-PAGE Stained with Coomassie Blue.
Storage Buffer	50 mM Tris-HCl, 10 mM reduced Glutathione, pH=8.0 in the elution buffer.
Storage Instruction	Store at -80°C. Aliquot to avoid repeated freezing and thawing.
Note	Best use within three months from the date of receipt of this protein.

Applications

- Enzyme-linked Immunoabsorbent Assay
- Western Blot (Recombinant protein)
- Antibody Production
- Protein Array

Gene Info — ERBB2IP

Entrez GeneID [55914](#)

GeneBank Accession# [NM_018695](#)

Protein Accession# [NP_061165](#)

Gene Name ERBB2IP

Gene Alias ERBIN, LAP2

Gene Description erbb2 interacting protein

Omim ID [606944](#)

Gene Ontology [Hyperlink](#)

Gene Summary This gene is a member of the leucine-rich repeat and PDZ domain (LAP) family. The encoded protein contains 17 leucine-rich repeats and one PDZ domain. It binds to the unphosphorylated form of the ERBB2 protein and regulates ERBB2 function and localization. It has also been shown to affect the Ras signaling pathway by disrupting Ras-Raf interaction. Alternate transcriptional splice variants encoding different isoforms have been found for this gene, but only two of them have been characterized to date. [provided by RefSeq]

Other Designations ERBB2 interacting protein|ERBB2-interacting protein|densin-180-like protein

Disease

- [Tobacco Use Disorder](#)