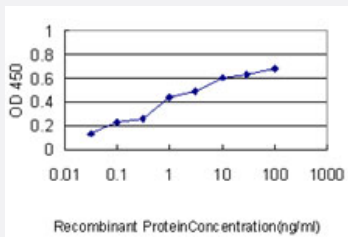


ERBB2IP monoclonal antibody (M01), clone 10G1

Catalog # H00055914-M01

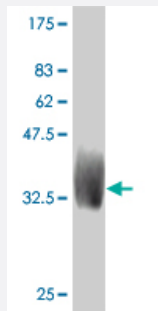
Size 100 ug

Applications



Sandwich ELISA (Recombinant protein)

Detection limit for recombinant GST tagged ERBB2IP is approximately 0.03ng/ml as a capture antibody.



Western Blot detection against Immunogen (36.74 KDa) .

Specification

Product Description

Mouse monoclonal antibody raised against a partial recombinant ERBB2IP.

Immunogen

ERBB2IP (NP_061165, 1272 a.a. ~ 1371 a.a) partial recombinant protein with GST tag. MW of the GST tag alone is 26 KDa.

Sequence

QGHELAKQEIRVRVEKDPPELGFSISGGVGGRGNPFRPDDDGIFVTRVQPEGPASKLLQPGDKIIQ
ANGYSFINIEHGQAVSLLKTFQNTVELIIVREVSS

Host

Mouse

Reactivity

Human

Interspecies Antigen Sequence	Mouse (80)
Isotype	IgG2a Kappa
Quality Control Testing	Antibody Reactive Against Recombinant Protein. Western Blot detection against Immunogen (36.74 KDa) .
Storage Buffer	In 1x PBS, pH 7.4
Storage Instruction	Store at -20°C or lower. Aliquot to avoid repeated freezing and thawing.

Applications

- Western Blot (Recombinant protein)

[Protocol Download](#)

- Sandwich ELISA (Recombinant protein)

Detection limit for recombinant GST tagged ERBB2IP is approximately 0.03ng/ml as a capture antibody.

[Protocol Download](#)

- ELISA

Gene Info — ERBB2IP

Entrez GeneID	55914
GeneBank Accession#	NM_018695
Protein Accession#	NP_061165
Gene Name	ERBB2IP
Gene Alias	ERBIN, LAP2
Gene Description	erbb2 interacting protein
Omim ID	606944
Gene Ontology	Hyperlink

Gene Summary

This gene is a member of the leucine-rich repeat and PDZ domain (LAP) family. The encoded protein contains 17 leucine-rich repeats and one PDZ domain. It binds to the unphosphorylated form of the ERBB2 protein and regulates ERBB2 function and localization. It has also been shown to affect the Ras signaling pathway by disrupting Ras-Raf interaction. Alternate transcriptional splice variants encoding different isoforms have been found for this gene, but only two of them have been characterized to date. [provided by RefSeq]

Other Designations

ERBB2 interacting protein|ERBB2-interacting protein|densin-180-like protein

Disease

- [Tobacco Use Disorder](#)