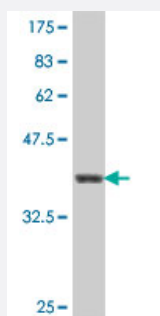


WSB2 polyclonal antibody (A01)

Catalog # H00055884-A01

Size 50 uL

Applications



Western Blot detection against Immunogen (37.66 KDa) .

Specification

Product Description	Mouse polyclonal antibody raised against a partial recombinant WSB2.
Immunogen	WSB2 (AAH15887, 1 a.a. ~ 105 a.a) partial recombinant protein with GST tag.
Sequence	MEAGEEPLLLAELKPGRPHQFDWKSSCETWSVAFSPDGSWFAWSQGHCVKLIPWPLEEQFIP KGFEAKSRSSKNETKGRGSPKEKTLDCGQIWWGLAFSPWPSP
Host	Mouse
Reactivity	Human
Interspecies Antigen Sequence	Mouse (96); Rat (95)
Quality Control Testing	Antibody Reactive Against Recombinant Protein. Western Blot detection against Immunogen (37.66 KDa) .
Storage Buffer	50 % glycerol
Storage Instruction	Store at -20°C or lower. Aliquot to avoid repeated freezing and thawing.

Applications

- Western Blot (Recombinant protein)

[Protocol Download](#)

- ELISA

Gene Info — WSB2

Entrez GeneID [55884](#)

GeneBank Accession# [BC015887](#)

Protein Accession# [AAH15887](#)

Gene Name WSB2

Gene Alias MGC10210, SBA2

Gene Description WD repeat and SOCS box-containing 2

Gene Ontology [Hyperlink](#)

Gene Summary This gene encodes a member of the WD-protein subfamily. The encoded protein contains five WD-repeats spanning most of the protein and an SOCS box in the C-terminus. The SOCS box may act as a bridge between specific substrate-binding domains and E3 ubiquitin protein ligases. [provided by RefSeq]

Other Designations CS box-containing WD protein|WD SOCS-box protein 2|WD repeat and SOCS box containing protein 2

Disease

- [Tobacco Use Disorder](#)