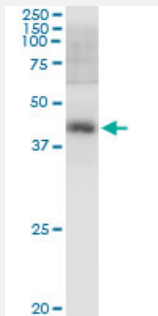


PBK (Human) IP-WB Antibody Pair

Catalog # H00055872-PW1

Size 1 Set

Applications



Immunoprecipitation of PBK transfected lysate using rabbit polyclonal anti-PBK and Protein A Magnetic Bead ([U0007](#)), and immunoblotted with mouse purified polyclonal anti-PBK.

Specification

Product Description	This IP-WB antibody pair set comes with one antibody for immunoprecipitation and another to detect the precipitated protein in western blot.
Reactivity	Human
Interspecies Antigen Sequence	Mouse (88); Rat (90)
Quality Control Testing	Immunoprecipitation-Western Blot (IP-WB) Immunoprecipitation of PBK transfected lysate using rabbit polyclonal anti-PBK and Protein A Magnetic Bead (U0007), and immunoblotted with mouse purified polyclonal anti-PBK.
Supplied Product	Antibody pair set content: 1. Antibody pair for IP: rabbit polyclonal anti-PBK (300 ul) 2. Antibody pair for WB: mouse purified polyclonal anti-PBK (50 ug)
Storage Instruction	Store reagents of the antibody pair set at -20°C or lower. Please aliquot to avoid repeated freeze thaw cycle. Reagents should be returned to -20°C storage immediately after use.

Applications

- Immunoprecipitation-Western Blot

[Protocol Download](#)

Gene Info — PBK

Entrez GeneID [55872](#)

Gene Name PBK

Gene Alias FLJ14385, Nori-3, SPK, TOPK

Gene Description PDZ binding kinase

Omim ID [611210](#)

Gene Ontology [Hyperlink](#)

Gene Summary This genes encodes a serine/threonine kinase related to the dual specific mitogen-activated protein kinase kinase (MAPKK) family. Evidence suggests that mitotic phosphorylation is required for its catalytic activity. This mitotic kinase may be involved in the activation of lymphoid cells and support testicular functions, with a suggested role in the process of spermatogenesis. [provided by RefSeq]

Other Designations MAPKK-like protein kinase|PDZ-binding kinase|T-LAK cell-originated protein kinase|serine/threonine protein kinase|spermatogenesis-related protein kinase

Disease

- [Genetic Predisposition to Disease](#)
- [Kidney Failure](#)
- [Tobacco Use Disorder](#)