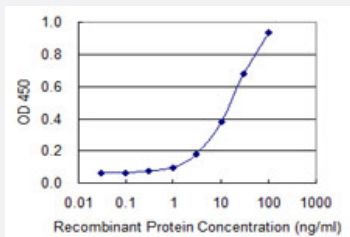


PBK monoclonal antibody (M15), clone 2A3

Catalog # H00055872-M15

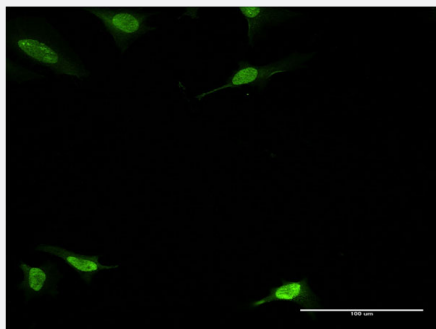
Size 100 ug

Applications



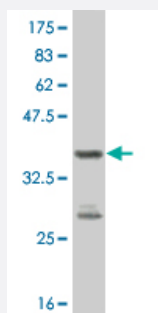
Sandwich ELISA (Recombinant protein)

Detection limit for recombinant GST tagged PBK is 0.3 ng/ml as a capture antibody.



Immunofluorescence

Immunofluorescence of monoclonal antibody to PBK on HeLa cell . [antibody concentration 10 ug/ml]



Western Blot detection against Immunogen (37.62 KDa) .

Specification

Product Description

Mouse monoclonal antibody raised against a full length recombinant PBK.

Immunogen	PBK (NP_060962.2, 122 a.a. ~ 229 a.a) full-length recombinant protein with GST tag. MW of the GST tag alone is 26 KDa.
Sequence	SLNDLIEERYKASQDPFPAAILKVALNMARGLYLHQEKLLHGDIKSSNVVIKGDFFETIKICDVGVS SLPLDENMTVTDPEACYIGTEPWKPKEAVEENGVIDKAD
Host	Mouse
Reactivity	Human
Interspecies Antigen Sequence	Mouse (88); Rat (90)
Isotype	IgG2b Kappa
Quality Control Testing	Antibody Reactive Against Recombinant Protein. Western Blot detection against Immunogen (37.62 KDa) .
Storage Buffer	In 1x PBS, pH 7.4
Storage Instruction	Store at -20°C or lower. Aliquot to avoid repeated freezing and thawing.

Applications

- Western Blot (Recombinant protein)

[Protocol Download](#)

- Sandwich ELISA (Recombinant protein)

Detection limit for recombinant GST tagged PBK is 0.3 ng/ml as a capture antibody.

[Protocol Download](#)

- ELISA

- Immunofluorescence

Immunofluorescence of monoclonal antibody to PBK on HeLa cell . [antibody concentration 10 ug/ml]

Gene Info — PBK

Entrez GeneID [55872](#)

GeneBank Accession# [NM_018492](#)

Protein Accession#	NP_060962.2
Gene Name	PBK
Gene Alias	FLJ14385, Nori-3, SPK, TOPK
Gene Description	PDZ binding kinase
Omim ID	611210
Gene Ontology	Hyperlink
Gene Summary	This genes encodes a serine/threonine kinase related to the dual specific mitogen-activated protein kinase kinase (MAPKK) family. Evidence suggests that mitotic phosphorylation is required for its catalytic activity. This mitotic kinase may be involved in the activation of lymphoid cells and support testicular functions, with a suggested role in the process of spermatogenesis. [provided by RefSeq]
Other Designations	MAPKK-like protein kinase PDZ-binding kinase T-LAK cell-originated protein kinase serine/threonine protein kinase spermatogenesis-related protein kinase

Disease

- [Genetic Predisposition to Disease](#)
- [Kidney Failure](#)
- [Tobacco Use Disorder](#)