

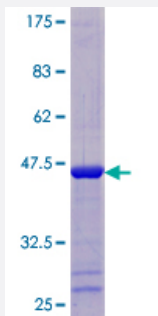
Full-Length

THEM2 (Human) Recombinant Protein (P01)

Catalog # H00055856-P01

Size 25 ug, 10 ug

Applications



Specification

Product Description	Human THEM2 full-length ORF (NP_060943.1, 1 a.a. - 140 a.a.) recombinant protein with GST-tag at N-terminal.
Sequence	MTSMTQSLREVIKAMTKARNFERVLGKITLVSAAPGKVICEMKVEEHTNAIGTLHGGLTATLVDNI STMALLCTERGAPGVSDMNITYMSPAKLGEDMITAHVLKQGKTLAFTSVDLTNKATGKLIQGRH TKHLGN
Host	Wheat Germ (in vitro)
Theoretical MW (kDa)	41.4
Interspecies Antigen Sequence	Mouse (83); Rat (81)
Preparation Method	in vitro wheat germ expression system
Purification	Glutathione Sepharose 4 Fast Flow
Quality Control Testing	12.5% SDS-PAGE Stained with Coomassie Blue.
Storage Buffer	50 mM Tris-HCl, 10 mM reduced Glutathione, pH=8.0 in the elution buffer.
Storage Instruction	Store at -80°C. Aliquot to avoid repeated freezing and thawing.

Note

Best use within three months from the date of receipt of this protein.

Applications

- Enzyme-linked Immunoabsorbent Assay
- Western Blot (Recombinant protein)
- Antibody Production
- Protein Array

Gene Info — THEM2

Entrez GeneID	55856
GeneBank Accession#	NM_018473.2
Protein Accession#	NP_060943.1
Gene Name	THEM2
Gene Alias	HT012, MGC4961, PNAS-27
Gene Description	thioesterase superfamily member 2
Gene Ontology	Hyperlink
Gene Summary	This gene encodes a member of the thioesterase superfamily. In humans, the protein co-localizes with microtubules and is essential for sustained cell proliferation. The orthologous mouse protein forms a homotetramer and is associated with mitochondria. The mouse protein functions as a medium- and long-chain acyl-CoA thioesterase. Multiple transcript variants encoding different isoforms have been found for this gene
Other Designations	15 Kd protein OTTHUMP00000016090 OTTHUMP00000039398 hypothalamus protein HT012

Disease

- [Breast cancer](#)
- [Breast Neoplasms](#)

- [Genetic Predisposition to Disease](#)
- [Ovarian cancer](#)