

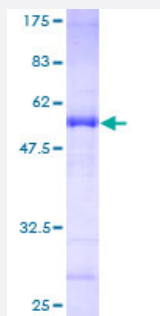
## Full-Length

# BM039 (Human) Recombinant Protein (P01)

Catalog # H00055839-P01

Size 25 ug, 10 ug

## Applications



## Specification

### Product Description

Human BM039 full-length ORF ( AAH07334, 1 a.a. - 204 a.a.) recombinant protein with GST-tag at N-terminal.

### Sequence

MDETVAEFIKRTILKIPMNELTTILKAWDFLSENQLQTVNFRQRKESVVQHLLHLCEEKRAISDAAL  
LDIYMQFHQHQKVWDVFQMSKGPGEVDLFDMKQFKNSFKKILQRALKNVTVSFRETEENAVWI  
RIAWGTQYTKPNQYKPTYVVYYSQTPYAFTSSSMLRRNTPLLGQELEATGKMYLRQEEIILDITEMKK  
ACN

### Host

Wheat Germ (in vitro)

### Theoretical MW (kDa)

48.18

### Interspecies Antigen Sequence

Mouse (67); Rat (67)

### Preparation Method

[in vitro wheat germ expression system](#)

### Purification

Glutathione Sepharose 4 Fast Flow

### Quality Control Testing

12.5% SDS-PAGE Stained with Coomassie Blue.

### Storage Buffer

50 mM Tris-HCl, 10 mM reduced Glutathione, pH=8.0 in the elution buffer.

### Storage Instruction

Store at -80°C. Aliquot to avoid repeated freezing and thawing.

## Note

Best use within three months from the date of receipt of this protein.

## Applications

- Enzyme-linked Immunoabsorbent Assay
- Western Blot (Recombinant protein)
- Antibody Production
- Protein Array

## Gene Info — CENPN

Entrez GeneID [55839](#)

GeneBank Accession# [BC007334](#)

Protein Accession# [AAH07334](#)

Gene Name CENPN

Gene Alias BM039, C16orf60, CENP-N, FLJ13607, FLJ22660

Gene Description centromere protein N

Omim ID [611509](#)

Gene Ontology [Hyperlink](#)

**Gene Summary** The centromere is a specialized chromatin domain, present throughout the cell cycle, that acts as a platform on which the transient assembly of the kinetochore occurs during mitosis. All active centromeres are characterized by the presence of long arrays of nucleosomes in which CENPA (MIM 117139) replaces histone H3 (see MIM 601128). CENPN is an additional factor required for centromere assembly (Foltz et al., 2006 [PubMed 16622419]).[supplied by OMIM]

**Other Designations** OTTHUMP00000174973|OTTHUMP00000174974