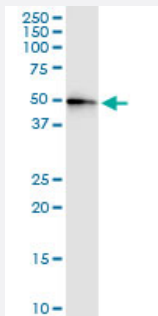


CENPJ (Human) IP-WB Antibody Pair

Catalog # H00055835-PW3

Size 1 Set

Applications



Immunoprecipitation of CENPJ transfected lysate using rabbit polyclonal anti-CENPJ and Protein A Magnetic Bead ([U0007](#)), and immunoblotted with mouse purified polyclonal anti-CENPJ.

Specification

Product Description	This IP-WB antibody pair set comes with one antibody for immunoprecipitation and another to detect the precipitated protein in western blot.
Reactivity	Human
Interspecies Antigen Sequence	Mouse (83); Rat (81)
Quality Control Testing	Immunoprecipitation-Western Blot (IP-WB) Immunoprecipitation of CENPJ transfected lysate using rabbit polyclonal anti-CENPJ and Protein A Magnetic Bead (U0007), and immunoblotted with mouse purified polyclonal anti-CENPJ.
Supplied Product	Antibody pair set content: 1. Antibody pair for IP: rabbit polyclonal anti-CENPJ (300 ul) 2. Antibody pair for WB: mouse purified polyclonal anti-CENPJ (50 ug)
Storage Instruction	Store reagents of the antibody pair set at -20°C or lower. Please aliquot to avoid repeated freeze thaw cycle. Reagents should be returned to -20°C storage immediately after use.

Applications

- Immunoprecipitation-Western Blot

[Protocol Download](#)

Gene Info — CENPJ

Entrez GeneID	55835
Gene Name	CENPJ
Gene Alias	BM032, CPAP, LAP, LIP1, MCPH6, MGC131581, MGC131582, MGC142222, MGC142224
Gene Description	centromere protein J
Omim ID	608393 609279
Gene Ontology	Hyperlink
Gene Summary	This gene encodes a protein that belongs to the centromere protein family. During cell division, this protein plays a structural role in the maintenance of centrosome integrity and normal spindle morphology, and it is involved in microtubule disassembly at the centrosome. This protein can function as a transcriptional coactivator in the Stat5 signaling pathway, and also as a coactivator of NF-kappaB-mediated transcription, likely via its interaction with the coactivator p300/CREB-binding protein. Mutations in this gene are associated with primary autosomal recessive microcephaly, a disorder characterized by severely reduced brain size and mental retardation. [provided by RefSeq]
Other Designations	LAG-3-associated protein LYST-interacting protein LIP1 LYST-interacting protein LIP7 OTTHUM P00000018137 centrosomal P4.1-associated protein

Disease

- [Genetic Predisposition to Disease](#)
- [Microcephaly](#)