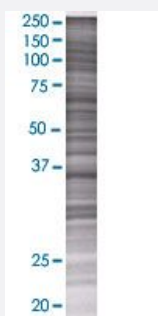


# VPS11 293T Cell Transient Overexpression Lysate(Denatured)

Catalog # H00055823-T01

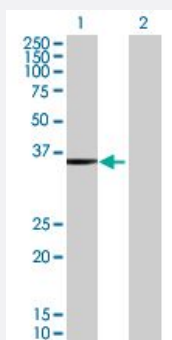
Size 100 uL

## Applications



### SDS-PAGE Gel

VPS11 transfected lysate.



### Western Blot

Lane 1: VPS11 transfected lysate ( 36.52 KDa)

Lane 2: Non-transfected lysate.

## Specification

Transfected Cell Line	293T
Plasmid	pCMV-VPS11 full-length
Host	Human
Theoretical MW (kDa)	36.52
Interspecies Antigen Sequence	Mouse (97); Rat (97)

**Quality Control Testing**

Transient overexpression cell lysate was tested with Anti-VPS11 antibody ([H00055823-B01](#)) by Western Blots.  
SDS-PAGE Gel  
VPS11 transfected lysate.  
Western Blot  
Lane 1: VPS11 transfected lysate ( 36.52 KDa)  
Lane 2: Non-transfected lysate.

**Storage Buffer**

1X Sample Buffer (50 mM Tris-HCl, 2% SDS, 10% glycerol, 300 mM 2-mercaptoethanol, 0.01% Bromophenol blue)

**Storage Instruction**

Store at -80°C. Aliquot to avoid repeated freezing and thawing.

## Applications

- Western Blot

## Gene Info — VPS11

**Entrez GeneID**[55823](#)**GeneBank Accession#**[BC012051.1](#)**Protein Accession#**[AAH12051.1](#)**Gene Name**

VPS11

**Gene Alias**

END1, PEP5, RNF108, hVPS11

**Gene Description**

vacuolar protein sorting 11 homolog (S. cerevisiae)

**Omim ID**[608549](#)**Gene Ontology**[Hyperlink](#)**Gene Summary**

Vesicle mediated protein sorting plays an important role in segregation of intracellular molecules into distinct organelles. Genetic studies in yeast have identified more than 40 vacuolar protein sorting (VPS) genes involved in vesicle transport to vacuoles. This gene encodes the human homolog of yeast class C Vps11 protein. The mammalian class C Vps proteins are predominantly associated with late endosomes/lysosomes, and like their yeast counterparts, may mediate vesicle trafficking steps in the endosome/lysosome pathway. [provided by RefSeq]

**Other Designations**

vacuolar protein sorting 11|vacuolar protein sorting protein 11

## Disease

- [Cardiovascular Diseases](#)
- [Diabetes Mellitus](#)
- [Edema](#)