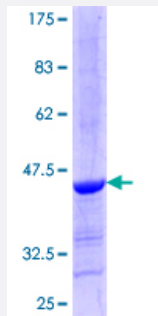


# ALLC (Human) Recombinant Protein (Q01)

Catalog # H00055821-Q01

Size 25 ug, 10 ug

## Applications



## Specification

<b>Product Description</b>	Human ALLC partial ORF ( NP_060906.2, 235 a.a. - 344 a.a.) recombinant protein with GST-tag at N-terminal.
<b>Sequence</b>	GHPNNIGVGGAKSMADGWETARRLDRPPILENDENGILLVPGCEWAVFRLAHPGVITRIEIDTKYF EGNAPDSCKVDGCILTTQEEAVIRQKWILPAHKWKPLLPVTKL
<b>Host</b>	Wheat Germ (in vitro)
<b>Theoretical MW (kDa)</b>	37.84
<b>Interspecies Antigen Sequence</b>	Mouse (79); Rat (80)
<b>Preparation Method</b>	<a href="#">in vitro wheat germ expression system</a>
<b>Purification</b>	Glutathione Sepharose 4 Fast Flow
<b>Quality Control Testing</b>	12.5% SDS-PAGE Stained with Coomassie Blue.
<b>Storage Buffer</b>	50 mM Tris-HCl, 10 mM reduced Glutathione, pH=8.0 in the elution buffer.
<b>Storage Instruction</b>	Store at -80°C. Aliquot to avoid repeated freezing and thawing.
<b>Note</b>	Best use within three months from the date of receipt of this protein.

## Applications

- Enzyme-linked Immunoabsorbent Assay
- Western Blot (Recombinant protein)
- Antibody Production
- Protein Array

## Gene Info — ALLC

Entrez GeneID [55821](#)

GeneBank Accession# [NM\\_018436](#)

Protein Accession# [NP\\_060906.2](#)

Gene Name ALLC

Gene Alias ALC

Gene Description allantoicase

Gene Ontology [Hyperlink](#)

**Gene Summary** Allantoicase (EC 3.5.3.4) participates in the uric acid degradation pathway. Its enzymatic activity, like that of urate oxidase (MIM 191540), was lost during vertebrate evolution.[supplied by OMIM]

**Other Designations** allantoate amidinohydrolase

## Pathway

- [Metabolic pathways](#)
- [Purine metabolism](#)