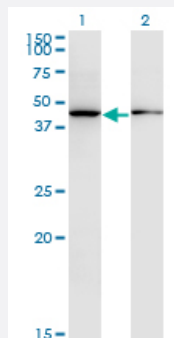


ALLC monoclonal antibody (M07), clone 3D3

Catalog # H00055821-M07

Size 100 ug

Applications

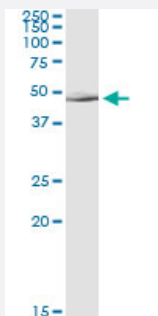


Western Blot (Transfected lysate)

Western Blot analysis of ALLC expression in transfected 293T cell line by ALLC monoclonal antibody (M07), clone 3D3.

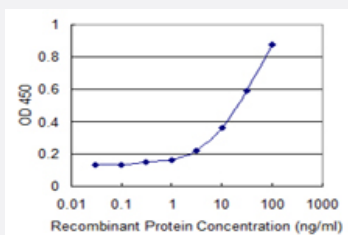
Lane 1: ALLC transfected lysate(45.6 KDa).

Lane 2: Non-transfected lysate.



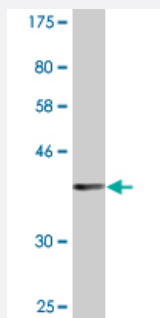
Immunoprecipitation

Immunoprecipitation of ALLC transfected lysate using anti-ALLC monoclonal antibody and Protein A Magnetic Bead, and immunoblotted with ALLC MaxPab rabbit polyclonal antibody.



Sandwich ELISA (Recombinant protein)

Detection limit for recombinant GST tagged ALLC is 1 ng/ml as a capture antibody.



Western Blot detection against Immunogen (37.84 KDa) .

Specification

Product Description	Mouse monoclonal antibody raised against a partial recombinant ALLC.
Immunogen	ALLC (NP_060906.2, 235 a.a. ~ 344 a.a) partial recombinant protein with GST tag. MW of the GST tag alone is 26 KDa.
Sequence	GHPNNIIGVGGAKSMADGWETARRLRPPILENDENGILLVPGCEWAVFRLAHPGVITRIEIDTKYFEGNAPDSCKVDGCILTTQEEAVIRQKWILPAHKWKPLLPVTKL
Host	Mouse
Reactivity	Human
Interspecies Antigen Sequence	Mouse (79); Rat (80)
Isotype	IgG1 Kappa
Quality Control Testing	Antibody Reactive Against Recombinant Protein. Western Blot detection against Immunogen (37.84 KDa) .
Storage Buffer	In 1x PBS, pH 7.4
Storage Instruction	Store at -20°C or lower. Aliquot to avoid repeated freezing and thawing.

Applications

● Western Blot (Transfected lysate)

Western Blot analysis of ALLC expression in transfected 293T cell line by ALLC monoclonal antibody (M07), clone 3D3.

Lane 1: ALLC transfected lysate(45.6 KDa).

Lane 2: Non-transfected lysate.

[Protocol Download](#)

- Western Blot (Recombinant protein)

[Protocol Download](#)

- Immunoprecipitation

Immunoprecipitation of ALLC transfected lysate using anti-ALLC monoclonal antibody and Protein A Magnetic Bead, and immunoblotted with ALLC MaxPab rabbit polyclonal antibody.

[Protocol Download](#)

- Sandwich ELISA (Recombinant protein)

Detection limit for recombinant GST tagged ALLC is 1 ng/ml as a capture antibody.

[Protocol Download](#)

- ELISA

Gene Info — ALLC

Entrez GeneID [55821](#)

GeneBank Accession# [NM_018436](#)

Protein Accession# [NP_060906.2](#)

Gene Name ALLC

Gene Alias ALC

Gene Description allantoicase

Gene Ontology [Hyperlink](#)

Gene Summary Allantoicase (EC 3.5.3.4) participates in the uric acid degradation pathway. Its enzymatic activity, like that of urate oxidase (MIM 191540), was lost during vertebrate evolution.[supplied by OMIM]

Other Designations allantoate amidinohydrolase

Pathway

- [Metabolic pathways](#)
- [Purine metabolism](#)