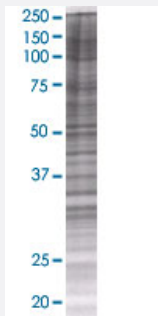


METTL2B 293T Cell Transient Overexpression Lysate(Denatured)

Catalog # H00055798-T01

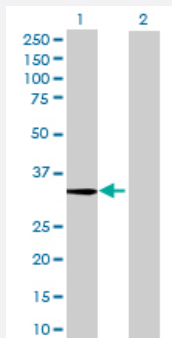
Size 100 uL

Applications



SDS-PAGE Gel

METTL2B transfected lysate.



Western Blot

Lane 1: METTL2B transfected lysate (34.54 KDa)

Lane 2: Non-transfected lysate.

Specification

Transfected Cell Line 293T

Plasmid pCMV-METTL2B full-length

Host Human

Theoretical MW (kDa) 34.54

Quality Control Testing Transient overexpression cell lysate was tested with Anti-METTL2B antibody ([H00055798-B01](#)) by Western Blots.
SDS-PAGE Gel
METTL2B transfected lysate.
Western Blot
Lane 1: METTL2B transfected lysate (34.54 KDa)
Lane 2: Non-transfected lysate.

Storage Buffer

1X Sample Buffer (50 mM Tris-HCl, 2% SDS, 10% glycerol, 300 mM 2-mercaptoethanol, 0.01% Bromophenol blue)

Storage Instruction

Store at -80°C. Aliquot to avoid repeated freezing and thawing.

Applications

- Western Blot

Gene Info — METTL2B

Entrez GeneID[55798](#)**GeneBank Accession#**[BC107586.1](#)**Protein Accession#**[AAI07587.1](#)**Gene Name**

METTL2B

Gene Alias

FLJ11350, FLJ12760, METL, METTL2, METTL2A, PSENIP1

Gene Description

methyltransferase like 2B

Omim ID[607846](#)**Gene Ontology**[Hyperlink](#)**Gene Summary**

This gene is a member of a family of methyltransferases that share homology with, but are distinct from, the UbiE family of methyltransferases. Alternatively spliced variants which encode different protein isoforms have been described; however, not all variants have been fully characterized. [provided by RefSeq]

Other Designations

-

Pathway

- [Aminophosphonate metabolism](#)
- [Androgen and estrogen metabolism](#)
- [Histidine metabolism](#)
- [Selenoamino acid metabolism](#)

- [Tyrosine metabolism](#)