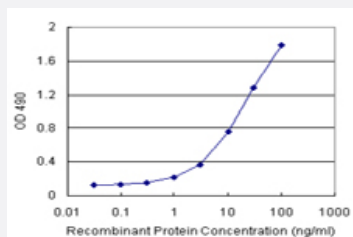


# RIOK2 (Human) Matched Antibody Pair

Catalog # H00055781-AP21

Size 1 Set

## Applications



Sandwich ELISA detection sensitivity ranging from 0.3 ng/ml to 100 ng/ml.

## Specification

<b>Product Description</b>	This antibody pair set comes with a matched antibody pair to detect and quantify the protein level of human RIOK2.
<b>Reactivity</b>	Human
<b>Interspecies Antigen Sequence</b>	Mouse (82); Rat (81)
<b>Quality Control Testing</b>	Standard curve using recombinant protein ( H00055781-P01 ) as an analyte. Sandwich ELISA detection sensitivity ranging from 0.3 ng/ml to 100 ng/ml.
<b>Supplied Product</b>	Antibody pair set content: 1. Capture antibody: rabbit MaxPab® affinity purified polyclonal anti-RIOK2 (100 ug) 2. Detection antibody: mouse purified polyclonal anti-RIOK2 (20 ug) *Reagents are sufficient for at least 1-2 x 96 well plates using recommended protocols.
<b>Storage Instruction</b>	Store reagents of the antibody pair set at -20°C or lower. Please aliquot to avoid repeated freeze thaw cycle. Reagents should be returned to -20°C storage immediately after use.

## Applications

- [ELISA Pair \(Recombinant protein\)](#)

[Protocol Download](#)

## Gene Info — RIOK2

Entrez GeneID	<a href="#">55781</a>
Gene Name	RIOK2
Gene Alias	FLJ11159
Gene Description	RIO kinase 2 (yeast)
Gene Ontology	<a href="#">Hyperlink</a>
Other Designations	RIO kinase 2

## Disease

- [Hypertension](#)
- [Kidney Failure](#)
- [Pre-Eclampsia](#)
- [Pregnancy Complications](#)