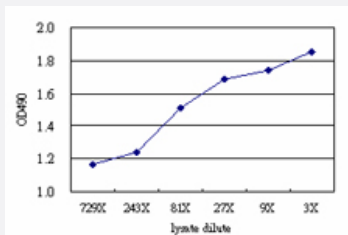


CNDP2 (Human) Matched Antibody Pair

Catalog # H00055748-AP51

Size 1 Set

Applications



Sandwich ELISA detection sensitivity ranging from approximately 729x to 3x dilution of the CNDP2 293T overexpression lysate (non-denatured).

Specification

Product Description	This antibody pair set comes with a matched antibody pair to detect and quantify the protein level of human CNDP2.
Reactivity	Human
Interspecies Antigen Sequence	Mouse (91); Rat (90)
Quality Control Testing	Standard curve using CNDP2 293T overexpression lysate (non-denatured) as an analyte. Sandwich ELISA detection sensitivity ranging from approximately 729x to 3x dilution of the CNDP2 293T overexpression lysate (non-denatured).
Supplied Product	Antibody pair set content: 1. Capture antibody: mouse monoclonal anti-CNDP2 (100 ug) 2. Detection antibody: rabbit purified polyclonal anti-CNDP2 (50 ug) *Reagents are sufficient for at least 3-5 x 96 well plates using recommended protocols.
Storage Instruction	Store reagents of the antibody pair set at -20°C or lower. Please aliquot to avoid repeated freeze thaw cycle. Reagents should be returned to -20°C storage immediately after use.

Applications

- ELISA Pair (Transfected lysate)

[Protocol Download](#)

Gene Info — CNDP2

Entrez GeneID [55748](#)

Gene Name CNDP2

Gene Alias CN2, CPGL, FLJ10830, HsT2298, PEPA

Gene Description CNDP dipeptidase 2 (metallopeptidase M20 family)

Omim ID [169800](#)

Gene Ontology [Hyperlink](#)

Gene Summary CNDP2, also known as tissue carnosinase and peptidase A (EC 3.4.13.18), is a nonspecific dipeptidase rather than a selective carnosinase (Teufel et al., 2003 [PubMed 12473676]).[supplied by OMIM]

Other Designations CNDP dipeptidase 2|cytosolic nonspecific dipeptidase|peptidase A

Disease

- [Diabetes Mellitus](#)
- [Diabetic Nephropathies](#)
- [Genetic Predisposition to Disease](#)
- [Kidney Failure](#)