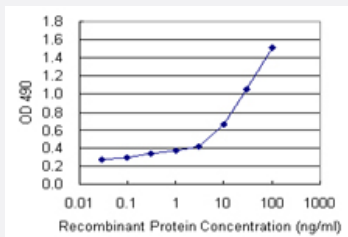


CNDP2 (Human) Matched Antibody Pair

Catalog # H00055748-AP22

Size 1 Set

Applications



Sandwich ELISA detection sensitivity ranging from 0.3 ng/ml to 100 ng/ml.

Specification

Product Description	This antibody pair set comes with a matched antibody pair to detect and quantify the protein level of human CNDP2.
Reactivity	Human
Interspecies Antigen Sequence	Mouse (91); Rat (90)
Quality Control Testing	Standard curve using recombinant protein (H00055748-P01) as an analyte. Sandwich ELISA detection sensitivity ranging from 0.3 ng/ml to 100 ng/ml.
Supplied Product	Antibody pair set content: 1. Capture antibody: rabbit MaxPab® affinity purified polyclonal anti-CNDP2 (100 ug) 2. Detection antibody: mouse purified polyclonal anti-CNDP2 (20 ug) *Reagents are sufficient for at least 1-2 x 96 well plates using recommended protocols.
Storage Instruction	Store reagents of the antibody pair set at -20°C or lower. Please aliquot to avoid repeated freeze thaw cycle. Reagents should be returned to -20°C storage immediately after use.

Applications

- [ELISA Pair \(Recombinant protein\)](#)

[Protocol Download](#)

Gene Info — CNDP2

Entrez GeneID	55748
Gene Name	CNDP2
Gene Alias	CN2, CPGL, FLJ10830, HsT2298, PEPA
Gene Description	CNDP dipeptidase 2 (metallopeptidase M20 family)
Omim ID	169800
Gene Ontology	Hyperlink
Gene Summary	CNDP2, also known as tissue carnosinase and peptidase A (EC 3.4.13.18), is a nonspecific dipeptidase rather than a selective carnosinase (Teufel et al., 2003 [PubMed 12473676]).[supplied by OMIM]
Other Designations	CNDP dipeptidase 2 cytosolic nonspecific dipeptidase peptidase A

Disease

- [Diabetes Mellitus](#)
- [Diabetic Nephropathies](#)
- [Genetic Predisposition to Disease](#)
- [Kidney Failure](#)