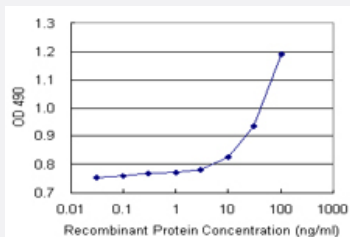


# CNDP2 (Human) Matched Antibody Pair

Catalog # H00055748-AP21      Size 1 Set

## Applications



Sandwich ELISA detection sensitivity ranging from 10 ng/ml to 100 ng/ml.

## Specification

<b>Product Description</b>	This antibody pair set comes with a matched antibody pair to detect and quantify the protein level of human CNDP2.
<b>Reactivity</b>	Human
<b>Interspecies Antigen Sequence</b>	Mouse (91); Rat (90)
<b>Quality Control Testing</b>	Standard curve using recombinant protein ( H00055748-P01 ) as an analyte. Sandwich ELISA detection sensitivity ranging from 10 ng/ml to 100 ng/ml.
<b>Supplied Product</b>	Antibody pair set content: 1. Capture antibody: rabbit MaxPab® affinity purified polyclonal anti-CNDP2 (100 ug) 2. Detection antibody: mouse polyclonal anti-CNDP2 (40 ul) *Reagents are sufficient for at least 3-5 x 96 well plates using recommended protocols.
<b>Storage Instruction</b>	Store reagents of the antibody pair set at -20°C or lower. Please aliquot to avoid repeated freeze thaw cycle. Reagents should be returned to -20°C storage immediately after use.

## Applications

- [ELISA Pair \(Recombinant protein\)](#)

[Protocol Download](#)

## Gene Info — CNDP2

Entrez GeneID	<a href="#">55748</a>
Gene Name	CNDP2
Gene Alias	CN2, CPGL, FLJ10830, HsT2298, PEPA
Gene Description	CNDP dipeptidase 2 (metallopeptidase M20 family)
Omim ID	<a href="#">169800</a>
Gene Ontology	<a href="#">Hyperlink</a>
Gene Summary	CNDP2, also known as tissue carnosinase and peptidase A (EC 3.4.13.18), is a nonspecific dipeptidase rather than a selective carnosinase (Teufel et al., 2003 [PubMed 12473676]).[supplied by OMIM]
Other Designations	CNDP dipeptidase 2 cytosolic nonspecific dipeptidase peptidase A

## Disease

- [Diabetes Mellitus](#)
- [Diabetic Nephropathies](#)
- [Genetic Predisposition to Disease](#)
- [Kidney Failure](#)