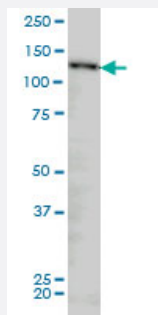


NUP133 monoclonal antibody (M01A), clone 3E8

Catalog # H00055746-M01A

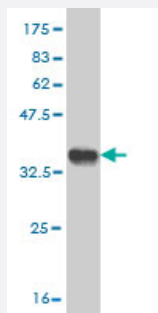
Size 200 uL

Applications



Western Blot (Cell lysate)

NUP133 monoclonal antibody (M01A), clone 3E8 Western Blot analysis of NUP133 expression in HeLa (Cat # L013V1).



Western Blot detection against Immunogen (35.31 KDa) .

Specification

Product Description	Mouse monoclonal antibody raised against a partial recombinant NUP133.
Immunogen	NUP133 (NP_060700, 1069 a.a. ~ 1155 a.a) partial recombinant protein with GST tag. MW of the GST tag alone is 26 KDa.
Sequence	LKLEILCKALQRDNWSSSDGKDDPIEVSKDSIFVKILQKLLKDGQLSEYLPEVKDLLQADQLGSLK SNPYFEFVLKANYEYVQQQ
Host	Mouse
Reactivity	Human

Interspecies Antigen Sequence	Mouse (89)
Isotype	IgG2a Kappa
Quality Control Testing	Antibody Reactive Against Recombinant Protein. Western Blot detection against Immunogen (35.31 KDa) .
Storage Buffer	In ascites fluid
Storage Instruction	Store at -20°C or lower. Aliquot to avoid repeated freezing and thawing.

Applications

- Western Blot (Cell lysate)

NUP133 monoclonal antibody (M01A), clone 3E8 Western Blot analysis of NUP133 expression in HeLa (Cat # L013V1).

[Protocol Download](#)

- Western Blot (Recombinant protein)

[Protocol Download](#)

- ELISA

Gene Info — NUP133

Entrez GeneID	55746
GeneBank Accession#	NM_018230
Protein Accession#	NP_060700
Gene Name	NUP133
Gene Alias	FLJ10814, MGC21133, hNUP133
Gene Description	nucleoporin 133kDa
Omim ID	607613
Gene Ontology	Hyperlink

Gene Summary

The nuclear envelope creates distinct nuclear and cytoplasmic compartments in eukaryotic cells. It consists of two concentric membranes perforated by nuclear pores, large protein complexes that form aqueous channels to regulate the flow of macromolecules between the nucleus and the cytoplasm. These complexes are composed of at least 100 different polypeptide subunits, many of which belong to the nucleoporin family. The nucleoporin protein encoded by this gene displays evolutionarily conserved interactions with other nucleoporins. This protein, which localizes to both sides of the nuclear pore complex at interphase, remains associated with the complex during mitosis and is targeted at early stages to the reforming nuclear envelope. This protein also localizes to kinetochores of mitotic cells. [provided by RefSeq]

Other Designations

OTTHUMP00000037467|OTTHUMP00000061095

Disease

- [Cardiovascular Diseases](#)
- [Diabetes Mellitus](#)
- [Disease Progression](#)
- [Disease Susceptibility](#)
- [Edema](#)
- [HIV Infections](#)