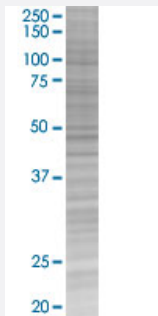


# EDEM2 293T Cell Transient Overexpression Lysate(Denatured)

Catalog # H00055741-T02

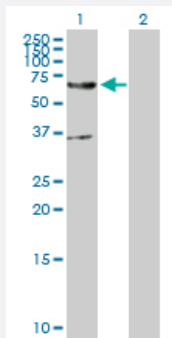
Size 100 uL

## Applications



### SDS-PAGE Gel

EDEM2 transfected lysate.



### Western Blot

Lane 1: EDEM2 transfected lysate ( 64.80 KDa)

Lane 2: Non-transfected lysate.

## Specification

**Transfected Cell Line** 293T

**Plasmid** pCMV-EDEM2 full-length

**Host** Human

**Theoretical MW (kDa)** 64.8

**Quality Control Testing** Transient overexpression cell lysate was tested with Anti-EDEM2 antibody ([H00055741-D01P](#)) by Western Blots.  
 SDS-PAGE Gel  
 EDEM2 transfected lysate.  
 Western Blot  
 Lane 1: EDEM2 transfected lysate ( 64.80 KDa)  
 Lane 2: Non-transfected lysate.

**Storage Buffer**

1X Sample Buffer (50 mM Tris-HCl, 2% SDS, 10% glycerol, 300 mM 2-mercaptoethanol, 0.01% Bromophenol blue)

**Storage Instruction**

Store at -80°C. Aliquot to avoid repeated freezing and thawing.

## Applications

- Western Blot

## Gene Info — EDEM2

**Entrez GeneID**[55741](#)**GeneBank Accession#**[BC001371.2](#)**Protein Accession#**[AAH01371.1](#)**Gene Name**

EDEM2

**Gene Alias**

C20orf31, C20orf49, FLJ10783, bA4204.1

**Gene Description**

ER degradation enhancer, mannosidase alpha-like 2

**Omim ID**[610302](#)**Gene Ontology**[Hyperlink](#)**Gene Summary**

In the endoplasmic reticulum (ER), misfolded proteins are retrotranslocated to the cytosol and degraded by the proteasome in a process known as ER-associated degradation (ERAD). EDEM2 belongs to a family of proteins involved in ERAD of glycoproteins (Mast et al., 2005 [PubMed 15537790]).[supplied by OMIM]

**Other Designations**

ER degradation-enhancing-mannosidase-like protein 2|OTTHUMP00000030728