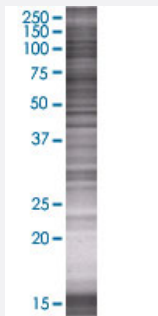


EDEM2 293T Cell Transient Overexpression Lysate(Denatured)

Catalog # H00055741-T01

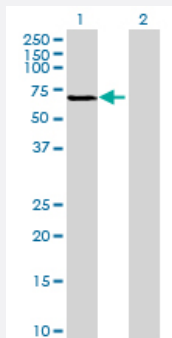
Size 100 uL

Applications



SDS-PAGE Gel

EDEM2 transfected lysate.



Western Blot

Lane 1: EDEM2 transfected lysate (63.69 KDa)

Lane 2: Non-transfected lysate.

Specification

Transfected Cell Line 293T

Plasmid pCMV-EDEM2 full-length

Host Human

Theoretical MW (kDa) 63.69

Quality Control Testing Transient overexpression cell lysate was tested with Anti-EDEM2 antibody ([H00055741-B01](#)) by Western Blots.
 SDS-PAGE Gel
 EDEM2 transfected lysate.
 Western Blot
 Lane 1: EDEM2 transfected lysate (63.69 KDa)
 Lane 2: Non-transfected lysate.

Storage Buffer	1X Sample Buffer (50 mM Tris-HCl, 2% SDS, 10% glycerol, 300 mM 2-mercaptoethanol, 0.01% Bromophenol blue)
Storage Instruction	Store at -80°C. Aliquot to avoid repeated freezing and thawing.

Applications

- Western Blot

Gene Info — EDEM2

Entrez GeneID	55741
GeneBank Accession#	BC001371.2
Protein Accession#	AAH01371.1
Gene Name	EDEM2
Gene Alias	C20orf31, C20orf49, FLJ10783, bA4204.1
Gene Description	ER degradation enhancer, mannosidase alpha-like 2
Omim ID	610302
Gene Ontology	Hyperlink
Gene Summary	In the endoplasmic reticulum (ER), misfolded proteins are retrotranslocated to the cytosol and degraded by the proteasome in a process known as ER-associated degradation (ERAD). EDEM2 belongs to a family of proteins involved in ERAD of glycoproteins (Mast et al., 2005 [PubMed 15537790]).[supplied by OMIM]
Other Designations	ER degradation-enhancing-mannosidase-like protein 2 OTTHUMP00000030728