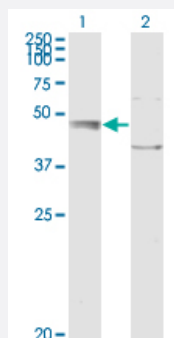


# C20orf31 monoclonal antibody (M01), clone 2E4

Catalog # H00055741-M01

Size 100 ug

## Applications

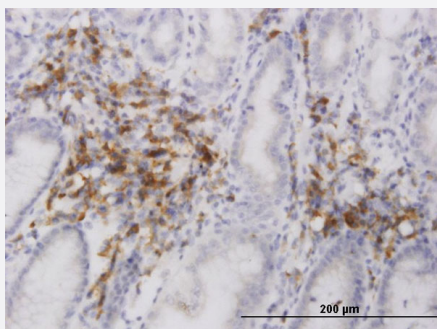


### Western Blot (Transfected lysate)

Western Blot analysis of EDEM2 expression in transfected 293T cell line by C20orf31 monoclonal antibody (M01), clone 2E4.

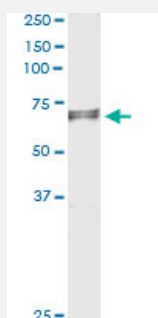
Lane 1: EDEM2 transfected lysate (64.8 KDa).

Lane 2: Non-transfected lysate.



### Immunohistochemistry (Formalin/PFA-fixed paraffin-embedded sections)

Immunoperoxidase of monoclonal antibody to C20orf31 on formalin-fixed paraffin-embedded human stomach. [antibody concentration 1.5 ug/ml]

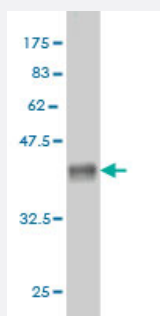
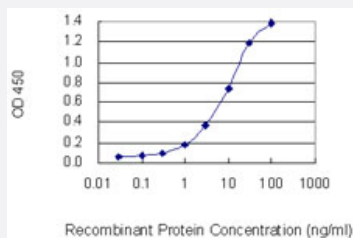


### Immunoprecipitation

Immunoprecipitation of EDEM2 transfected lysate using anti-EDEM2 monoclonal antibody and Protein A Magnetic Bead, and immunoblotted with EDEM2 MaxPab rabbit polyclonal antibody.

## Sandwich ELISA (Recombinant protein)

Detection limit for recombinant GST tagged EDEM2 is 0.1 ng/ml as a capture antibody.



Western Blot detection against Immunogen (36.74 KDa) .

## Specification

<b>Product Description</b>	Mouse monoclonal antibody raised against a partial recombinant C20orf31.
<b>Immunogen</b>	C20orf31 (NP_060687, 479 a.a. ~ 578 a.a) partial recombinant protein with GST tag. MW of the GST tag alone is 26 KDa.
<b>Sequence</b>	PIDPAALHCCQRLKEEQWEVDLMREFYSLKRCRSKFQKNTVSSGPWEPPARPGTLFSPENHDQARERKPAKQKVPLLSCPSQPFTSKLALLGQVFLDSS
<b>Host</b>	Mouse
<b>Reactivity</b>	Human
<b>Isotype</b>	IgG1 Kappa
<b>Quality Control Testing</b>	Antibody Reactive Against Recombinant Protein. Western Blot detection against Immunogen (36.74 KDa) .
<b>Storage Buffer</b>	In 1x PBS, pH 7.4
<b>Storage Instruction</b>	Store at -20°C or lower. Aliquot to avoid repeated freezing and thawing.

## Applications

- Western Blot (Transfected lysate)

Western Blot analysis of EDEM2 expression in transfected 293T cell line by C20orf31 monoclonal antibody (M01), clone 2E4.

Lane 1: EDEM2 transfected lysate(64.8 KDa).

Lane 2: Non-transfected lysate.

[Protocol Download](#)

- Western Blot (Recombinant protein)

[Protocol Download](#)

- Immunohistochemistry (Formalin/PFA-fixed paraffin-embedded sections)

Immunoperoxidase of monoclonal antibody to C20orf31 on formalin-fixed paraffin-embedded human stomach. [antibody concentration 1.5 ug/ml]

[Protocol Download](#)

- Immunoprecipitation

Immunoprecipitation of EDEM2 transfected lysate using anti-EDEM2 monoclonal antibody and Protein A Magnetic Bead, and immunoblotted with EDEM2 MaxPab rabbit polyclonal antibody.

[Protocol Download](#)

- Sandwich ELISA (Recombinant protein)

Detection limit for recombinant GST tagged EDEM2 is 0.1 ng/ml as a capture antibody.

[Protocol Download](#)

- ELISA

## Gene Info — EDEM2

Entrez GeneID	<a href="#">55741</a>
---------------	-----------------------

GeneBank Accession#	<a href="#">NM_018217</a>
---------------------	---------------------------

Protein Accession#	<a href="#">NP_060687</a>
--------------------	---------------------------

Gene Name	EDEM2
-----------	-------

Gene Alias	C20orf31, C20orf49, FLJ10783, bA4204.1
------------	--

Gene Description	ER degradation enhancer, mannosidase alpha-like 2
------------------	---

<b>Omim ID</b>	<a href="#">610302</a>
<b>Gene Ontology</b>	<a href="#">Hyperlink</a>
<b>Gene Summary</b>	In the endoplasmic reticulum (ER), misfolded proteins are retrotranslocated to the cytosol and degraded by the proteasome in a process known as ER-associated degradation (ERAD). EDEM2 belongs to a family of proteins involved in ERAD of glycoproteins (Mast et al., 2005 [PubMed 15537790]).[supplied by OMIM]
<b>Other Designations</b>	ER degradation-enhancing-mannosidase-like protein 2 OTTHUMP00000030728