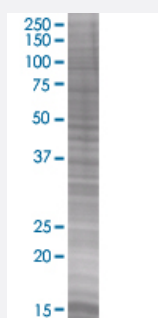


CDC37L1 293T Cell Transient Overexpression Lysate(Denatured)

Catalog # H00055664-T01

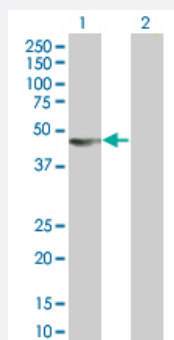
Size 100 uL

Applications



SDS-PAGE Gel

CDC37L1 transfected lysate



Western Blot

Lane 1: CDC37L1 transfected lysate (38.8 KDa).

Lane 2: Non-transfected lysate.

Specification

Transfected Cell Line	293T
Plasmid	pCMV-CDC37L1 full-length
Host	Human
Theoretical MW (kDa)	38.8
Interspecies Antigen Sequence	Mouse (89); Rat (87)

Quality Control Testing

Transient overexpression cell lysate was tested with Anti-CDC37L1 antibody ([H00055664-B01](#)) by Western Blots.
SDS-PAGE Gel
CDC37L1 transfected lysate
Western Blot
Lane 1: CDC37L1 transfected lysate (38.8 KDa).
Lane 2: Non-transfected lysate.

Storage Buffer

1X Sample Buffer (50 mM Tris-HCl, 2% SDS, 10% glycerol, 300 mM 2-mercaptoethanol, 0.01% Bromophenol blue)

Storage Instruction

Store at -80°C. Aliquot to avoid repeated freezing and thawing.

Applications

- Western Blot

Gene Info — CDC37L1

Entrez GeneID[55664](#)**GeneBank Accession#**[NM_017913](#)**Protein Accession#**[NP_060383](#)**Gene Name**

CDC37L1

Gene Alias

CDC37B, FLJ20639, HARC

Gene Description

cell division cycle 37 homolog (S. cerevisiae)-like 1

Omim ID[610346](#)**Gene Ontology**[Hyperlink](#)**Gene Summary**

CDC37L1 is a cytoplasmic phosphoprotein that exists in complex with HSP90 (HSPCA; MIM 140571) as well as several other proteins involved in HSP90-mediated protein folding (Scholz et al., 2001 [PubMed 11413142]).[supplied by OMIM]

Other Designations

CDC37 cell division cycle 37 homolog-like 1|Hsp90-associating relative of Cdc37|OTTHUMP0000021001