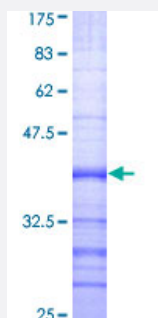


# BMP2K (Human) Recombinant Protein (Q01)

Catalog # H00055589-Q01

Size 25 ug, 10 ug

## Applications



## Specification

<b>Product Description</b>	Human BMP2K partial ORF ( AAH36021, 540 a.a. - 650 a.a.) recombinant protein with GST-tag at N-terminal.
<b>Sequence</b>	YQQAFFQQQMLAQHQPSQQQASPEYLTSPQEFSPALVSYTSSLPAQVGTIMDSSYSANRSVADK EAIANFTNQKNISNPPDMSGWNPFGE DNFSKL TEEELLDREFDLLRS
<b>Host</b>	Wheat Germ (in vitro)
<b>Theoretical MW (kDa)</b>	37.84
<b>Interspecies Antigen Sequence</b>	Mouse (88)
<b>Preparation Method</b>	<a href="#">in vitro wheat germ expression system</a>
<b>Purification</b>	Glutathione Sepharose 4 Fast Flow
<b>Quality Control Testing</b>	12.5% SDS-PAGE Stained with Coomassie Blue.
<b>Storage Buffer</b>	50 mM Tris-HCl, 10 mM reduced Glutathione, pH=8.0 in the elution buffer.
<b>Storage Instruction</b>	Store at -80°C. Aliquot to avoid repeated freezing and thawing.
<b>Note</b>	Best use within three months from the date of receipt of this protein.

## Applications

- Enzyme-linked Immunoabsorbent Assay
- Western Blot (Recombinant protein)
- Antibody Production
- Protein Array

## Gene Info — BMP2K

Entrez GeneID [55589](#)

GeneBank Accession# [BC036021](#)

Protein Accession# [AAH36021](#)

Gene Name BMP2K

Gene Alias BIKE, DKFZp434K0614, DKFZp434P0116, HRIHFB2017

Gene Description BMP2 inducible kinase

Gene Ontology [Hyperlink](#)

**Gene Summary** This gene is the human homolog of mouse BMP-2-inducible kinase. Bone morphogenic proteins (BMPs) play a key role in skeletal development and patterning. Expression of the mouse gene is increased during BMP-2 induced differentiation and the gene product is a putative serine/threonine protein kinase containing a nuclear localization signal. Therefore, the protein encoded by this human homolog is thought to be a protein kinase with a putative regulatory role in attenuating the program of osteoblast differentiation. Two transcript variants encoding different isoforms have been found for this gene. [provided by RefSeq]

**Other Designations** BMP-2 inducible kinase

## Disease

- [Genetic Predisposition to Disease](#)
- [Myopia](#)